

# GISTM Disclosure Report: Iron Ore Brazil

---



This Report summarises information related to the **Minas-Rio Tailings Storage Facility (TSF), Barragem de Rejeitos, at American Minério de Ferro Brasil S.A.**, including data specified by the Global Industry Standard on Tailings Management (GISTM)<sup>1</sup> Requirement 15.1 as well as a summary of current GISTM conformance levels.

This Report is organised in four sections, as follows:

- 1 – TSF Descriptions
- 2 – TSF Material Findings (including Environmental & Social)
- 3 – TSF Emergency Management
- 4 – TSF GISTM Conformance Summary

This 2025 report is based on the commitments made by Anglo American PLC and accords with the current group structure and ownership.

---

<sup>1</sup> GISTM is available from: <https://globaltailingsreview.org/global-industry-standard/>.

## 1 – TSF Descriptions

### 1.1 Existing TSF Description (GISTM Requirement 15.1b)

Table 1. Existing TSF Characteristics

Facility Name (Operation)	Country origin	Latitude	Longitude	<sup>1</sup> GISTM Consequence Classification	Status	Raising Method	Current Height (largest Dam)	Final Height (largest Dam)	Last <sup>2</sup> ITRB Review	Third Party validation complete?	Last <sup>3</sup> DSR
Barragem de Rejeitos (Minas Rio)	Brazil	-18.8608	-43.40472	Very High	Active	Downstream	60	60	2024 (Annual)	Yes	2024 (5 yearly)

<sup>1</sup>The consequence classification for this facility is driven by Environmental, Health, Social and Cultural impacts.

#### Lifecycle summary:

**Barragem de Rejeitos** is formed by three containment walls, Barragem de Rejeitos Dam, Dique de Sela 1 and 6B that has been active since 2014 as part of the 1st raise of the TSF. All the containment structures are downstream raised using compacted borrow material. An expansion is planned that includes further raising of the Barragem de Rejeitos as well as commissioning of the constructed Dique de Sela 3, 6A and 8 as part of the 2<sup>nd</sup> raise. The approved closure plan includes reshaping of the top surface and provision of a growth medium, vegetation and surface water management systems to ensure the facility is free draining

#### Third Party Validation of GISTM disclosure:

As per the International Council on Mining and Metals (ICMM) Conformance Protocols (2021), the third-party validation may cover all the requirements of the Standard, or a representative sample of the requirements selected independently at the discretion of the third-party validators. For the Anglo American GISTM validation, the validation team, consisting of independent industry specialists, selected ~50 out of a total of 77 requirements. The selected requirements covered each of the 6 topics and 15 principles of the Standard.

The 2024 GISTM disclosure of the Very High Consequence Classification TSF, Barragem de Rejeitos, was subjected to third party validation, with no findings raised.

**Financial capacity** is assessed for the Anglo American Group as a whole. Based on the 2024 Integrated Annual Report, we have considered the Group's cash flow forecasts for the period to the end of December 2026 under base and downside scenarios with reference to the Group's principal risks as set out within the Group Viability Statement included within the Integrated Annual Report.

We are satisfied that the Group's forecasts and projections, taking account of reasonably possible changes in trading performance over the assessment period, indicate the Group has adequate financial capacity (including insurance, to the extent commercially reasonable) to meet the closure requirement obligations for the tailings facility in its current state as those requirements fall due.

<sup>2</sup>ITRB: Independent Technical Review Board. <sup>3</sup>DSR: Dam Safety Review

## 1.2 New TSF Description (GISTM Requirement 15.1a)

**PDER Norte:** PDER Norte is a new Tailings Storage Facility (TSF) for the disposal of filtered tailings at Minas-Rio, Brazil. Originally designed for waste rock and overburden disposal, this facility was updated to accommodate filtered flotation and magnetic separation tailings, according to the new strategy.

A Multi-Criteria Alternatives Analysis (MCAA) was conducted to assess the feasibility of options that include using the existing waste rock dump and alternative greenfield locations. The outcome of the MCAA was that the existing waste rock dump was the preferred alternative. The PDER Norte is therefore included in the environmental permit of Minas Rio.

An extensive geotechnical investigation campaign was subsequently carried out and an experimental embankment was constructed to evaluate the geotechnical behaviour of compacted filtered tailings. Numerical stress-strain simulations and dynamic analysis were conducted to inform stability requirements that are to be implemented in the final design.

In 2024, a stack break analysis was developed to evaluate the potential impacts of a PDER Norte failure. The analysis concluded that, even in the worst-case scenario where the design criteria and controls are not followed, there is no impact on downstream communities. There is a potential impact in MG-10, a state road located near the site, resulting in potential infrastructure and economic consequences. Based on that, this TSF has a Consequence Classification of "Significant".

Construction completion of the filtration plant, the pre-deposition works of the TSF and the commissioning is planned for 2025 to 2026.

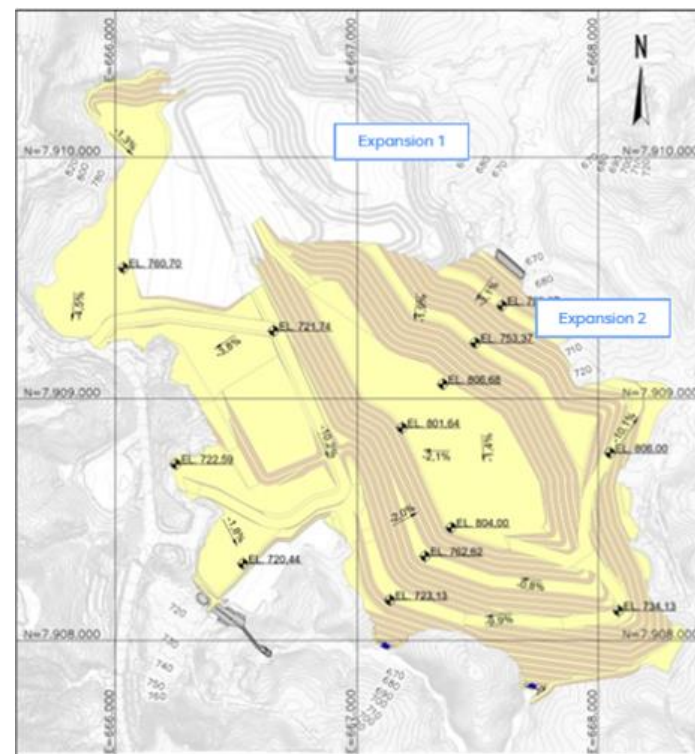


Figure 1: PDER Norte

## 2 – TSF material findings (including environmental & social)

**Table 2. Themes of material findings and measures underway**

Theme	Recommendations summary	Status of mitigation measure(s)
<b>Dam Safety (Risk Assessment, <sup>1</sup>DSIs, <sup>2</sup>DSRs and <sup>3</sup>TRPs)</b>		
1	<ul style="list-style-type: none"> <li>Perform dynamic analysis using appropriate material characterisation of the foundation soils.</li> <li>Incorporate sensitivity analyses of selected strength parameters and phreatic surface input.</li> </ul>	<ul style="list-style-type: none"> <li>Dynamic analysis was concluded for the Main Dam and for Dike 1.</li> <li>Sensitivity analyses for strength parameters and phreatic surface were concluded.</li> </ul>
2	<ul style="list-style-type: none"> <li>Use data collected for reservoir water balance (precipitation, evaporation, pumping and water level) to calibrate rainfall-runoff model parameters for use in the water balance.</li> <li>Evaluate the impacts of filtration plant operation on the site water balance.</li> </ul>	<ul style="list-style-type: none"> <li>Calibration of parameters for use in the water balance was completed confirming that the current parameters consider the critical scenario. The impact of filtration plant operation on the site water balance has been considered and is to be reevaluated upon startup.</li> </ul>
3	<ul style="list-style-type: none"> <li>Characterise the foundation for the mini tunnel downstream of Dam 1 since it was constructed using tunnelling construction methods and partly founded on alluvial soils.</li> <li>Evaluate deformation performance of the mini tunnel.</li> <li>Install instrumentation in the tunnel to monitor for deformations.</li> </ul>	<ul style="list-style-type: none"> <li>Foundation characterization was completed.</li> <li>Numerical analysis was performed in the mini tunnel cross section. There are no relevant deformations expected for this area, with no impact on the geotechnical and operational conditions of this structure.</li> <li>Instrumentation (optical fibre) was installed in 2024 to monitor potential movement in the mini tunnel.</li> </ul>
<b>Environmental Monitoring</b>		
1	Integrate the management of groundwater aspects into the Tailings Management System.	Integration of hydrogeology and tailings management systems has been materially advanced with continuous improvement ongoing.
<b>Social Monitoring</b>		
1	A grievance management system is in place. In the reporting period TSF-related grievances were received. The grievances related to the unscheduled activation of the sound alert of the siren during routine maintenance.	All grievances have been answered and closed.

<sup>1</sup>DSR: Dam Safety Inspection. <sup>2</sup>DSR: Dam Safety Review. <sup>3</sup>TRP: Technical Review Panel

### 3 – TSF Emergency Management

---

Emergency Management Plans (EMPs), which include TSF failure emergencies, are in place at all sites and are reviewed and updated on a regular basis. EMPs are developed based on Dam Breach Analysis, and risk and impact assessments. Engagement with internal and external stakeholders is conducted regularly to inform the EMPs and to disseminate key information about emergency preparedness and response. Training and testing of the EMPs is conducted on a regular basis, and includes external stakeholders such as potentially affected communities, local authorities and first responders, as relevant. Desktop exercises are conducted on a regular basis. Every year field exercises are conducted with relevant communities and local authorities for our Very High and Extreme facilities, and notification systems, muster points, and evacuation routes are in place in relevant communities and at sites.

Site EMPs detail actions to contain and monitor hazards, list measures to implement in case of an emergency, include internal and external notification and communication processes, as well as roles and responsibilities for emergency preparedness and response, and link to Anglo American Crisis Management processes.

**Table 3: Information for Very High and Extreme Facilities**

<b>TSF</b>	<b>Last field exercise on TSF failure emergency with relevant communities</b>	<b>Last EMP (internal) desktop exercise</b>	<b>Last engagement with relevant external stakeholders on TSF failure emergency management</b>
Barragem de Rejeitos	2025	2025	2025

---

## 4 – TSF GISTM Conformance Summary

This section presents the GISTM conformance status for all our TSFs, as of 5 August 2025 based on self-assessment data using the ICMM Conformance Protocols (ICMM, 2021)<sup>1</sup> and third party validation feedback, where applicable. Table 4 sets out the conformance level definitions.

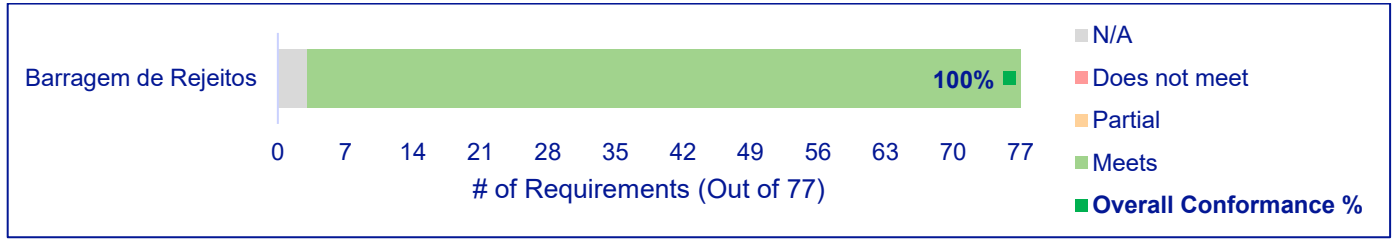
Table 4. Description of conformance levels

Conformance level	Description of outcome
Meets	<p>Systems and/or practices related to the Requirement have been implemented and there is sufficient evidence to demonstrate that the Requirement is being met.</p> <p><u>'Meets with a plan'</u></p> <p>Requirements may be designated as 'Meets with a plan' provided that the following stipulations have been met:</p> <ul style="list-style-type: none"> <li>• The requirements whereby 'Meets with a plan' is assessed needs to be specifically identified (i.e., distinguished from 'Meets').</li> <li>• Confirmation that the work has been substantially progressed and is supported by systems and processes (modified from ICMM Conformance Protocols, 2021).</li> </ul>
Partially meets	<p>Systems and/or practices related to meeting the Requirement have been only partially implemented. Gaps or weaknesses persist that may contribute to an inability to meet the Requirement, or insufficient verifiable evidence has been provided to demonstrate that the activity is aligned to the Requirement.</p>
Does not meet	<p>Systems and/or practices required to support implementation of the Requirement are not in place, or are not being implemented, or cannot be evidenced.</p>
Not applicable (N/A)	<p>The specific Requirement is not applicable to the context of the facility.</p>

This Disclosure Report is prepared in accordance with the Requirements of the GISTM, and with the benefit of guidance issued by the ICMM. It concerns conformance with the GISTM only, and does not address compliance with applicable legal and/or regulatory requirements. Any indication that the facility is not in full conformance with one or more Requirements of the GISTM as at 5 August 2025 should not be understood to mean that the facility is not in compliance with any applicable legal or regulatory requirements that may overlap with the Requirements of the GISTM. American Minério de Ferro Brasil S.A seeks to ensure full compliance with applicable legal and regulatory requirements at all times.

<sup>1</sup> ICMM (2021). Conformance Protocols: Global Industry Standard on Tailings Management. <https://www.icmm.com/en-gb/our-principles/tailings/tailings-conformance-protocols>.

Figure 2. TSF GISTM conformance



We are fully conformant to GISTM on our very high consequence classification facility, Barragem de Rejeitos.

### Group terminology

In this document, references to “Anglo American”, the “Anglo American Group”, the “Group”, “we”, “us”, and “our” are to refer to either Anglo American plc and its subsidiaries and/or those who work for them generally, or where it is not necessary to refer to a particular entity, entities or persons. The use of those generic terms herein is for convenience only, and is in no way indicative of how the Anglo American Group or any entity within it is structured, managed or controlled. Anglo American subsidiaries, and their management, are responsible for their own day-to-day operations, including but not limited to securing and maintaining all relevant licences and permits, operational adaptation and implementation of Group policies, management, training and any applicable local grievance mechanisms. Anglo American produces group-wide policies and procedures to ensure best uniform practices and standardisation across the Anglo American Group but is not responsible for the day to day implementation of such policies. Such policies and procedures constitute prescribed minimum standards only. Group operating subsidiaries are responsible for adapting those policies and procedures to reflect local conditions where appropriate, and for implementation, oversight, and monitoring within their specific businesses.

**Disclaimer:** This document has been prepared by Anglo American plc (“Anglo American”). By reviewing this document you agree to be bound by the following conditions.

This document is for information purposes only and does not constitute, nor is to be construed as, an offer to sell or the recommendation, solicitation, inducement or offer to buy, subscribe for or sell shares in Anglo American or any other securities by Anglo American or any other party. Further, it should not be treated as giving investment, legal, accounting, regulatory, taxation or other advice and has no regard to the specific investment or other objectives, financial situation or particular needs of any recipient.

No representation or warranty, either express or implied, is provided, nor is any duty of care, responsibility or liability assumed, in each case in relation to the accuracy, completeness or reliability of the information contained herein. None of Anglo American or each of its affiliates, advisors or representatives shall have any liability whatsoever (in negligence or otherwise) for any loss or damage of whatever nature, howsoever arising from any use of, or reliance on this material or otherwise arising in connection with this material.

### Forward-looking statements and third party information



The information contained in this document is based on Anglo American’s governance, technical and review systems and internal self-assessments. In order to publish this document on 5 August 2025, Anglo American has, where necessary, relied on predictions of anticipated conformance to Global Industry Standard on Tailings Management (“GISTM”) standards as at that date. This document therefore includes forward-looking statements. All statements other than statements of historical facts included in this document, including, without limitation, those regarding Anglo American’s financial position, are forward-looking statements. By their nature, such forward-looking statements involve known and unknown risks, uncertainties and other factors which may cause the actual results, performance or achievements of Anglo American or industry results to be materially different from any future results, performance or achievements expressed or implied by such forward-looking statements.

Such forward-looking statements are based on numerous assumptions regarding Anglo American’s present and future business strategies and the environment in which Anglo American will operate in the future. Forward-looking statements should, therefore, be construed accordingly and undue reliance should not be placed on forward-looking statements. These forward-looking statements speak only as of the date of this document. Anglo American expressly disclaims any obligation or undertaking (except as required by applicable law or the GISTM) to release publicly any updates or revisions to any forward-looking or any other statement contained herein to reflect any change in Anglo American’s expectations with regard thereto or any change in events, conditions or circumstances on which any such statement is based.

Nothing in this document should be interpreted to mean that future earnings per share of Anglo American will necessarily match or exceed its historical published earnings per share.

## No Investment Advice

This document has been prepared without reference to your particular investment objectives, financial situation, taxation position and particular needs. It is important that you view this document in its entirety. If you are in any doubt in relation to these matters, you should consult your stockbroker, bank manager, solicitor, accountant, taxation adviser or other independent financial adviser (where applicable, as authorised under the Financial Services and Markets Act 2000 in the UK, or in South Africa, under the Financial Advisory and Intermediary Services Act 37 of 2002 or under any other applicable legislation).

©Anglo American Services (UK) Ltd. 2025.  AngloAmerican™ and ™ are trademarks of Anglo American Services (UK) Ltd.