



Site Visit to Sishen Mine

14 April 2010



A member of the Anglo American plc group

Summary: Kumba Iron Ore

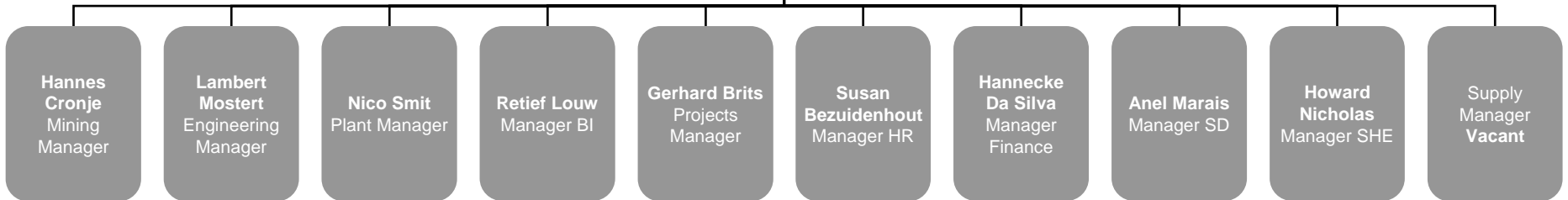
- Large hematite ore body: ±14km x 3.2km x 400m: 2.4bt resource → 1.6bt reserve
- Hard ore: 60:40 lump to fine ratio
- Mining started in 1953; First ore exported in 1976
- Highly mechanized, continuous blending mining operation
- Entire Run-of-Mine (ROM) beneficiated
 - Dense medium separation (DMS) - drums and cyclones
 - JIG gravity separation – Coarse, medium and fine jigs
- Products
 - 25mm 66% Fe lump
 - 25mm 64% Fe lump
 - 27 and 20mm 66% Fe lump – niche products
 - 8mm 65% Fe coarse sinter – niche product
 - 6.3mm 64% Fe fines
- Consistent product quality is ensured through final product blending and reclaiming at Sishen before dispatch to customers
- Export ore is transported via the Sishen-Saldanha Iron Ore Export Channel (IOEC) to Saldanha port



Sishen Mine Management Team

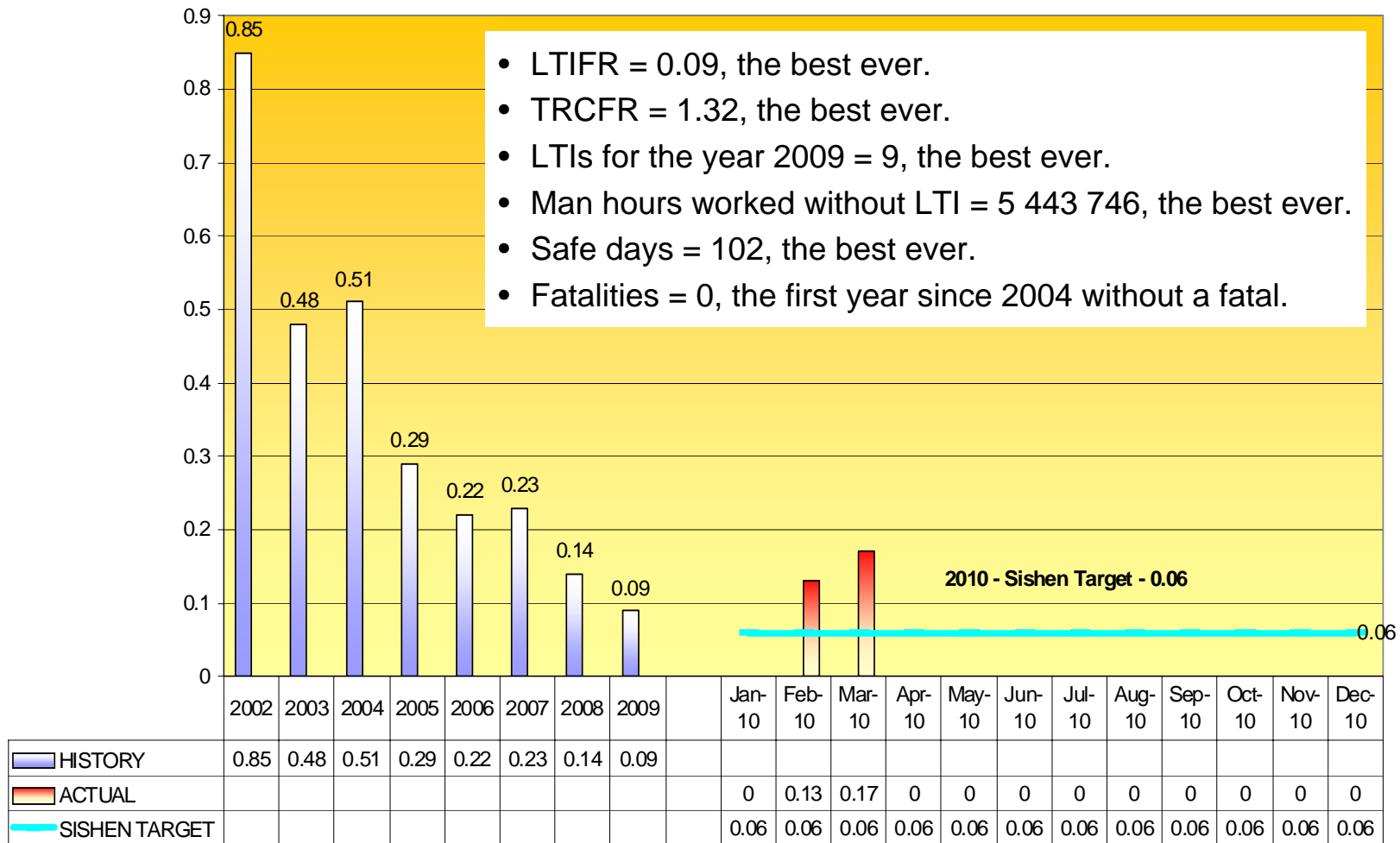


Andrew Loots
General
Manager

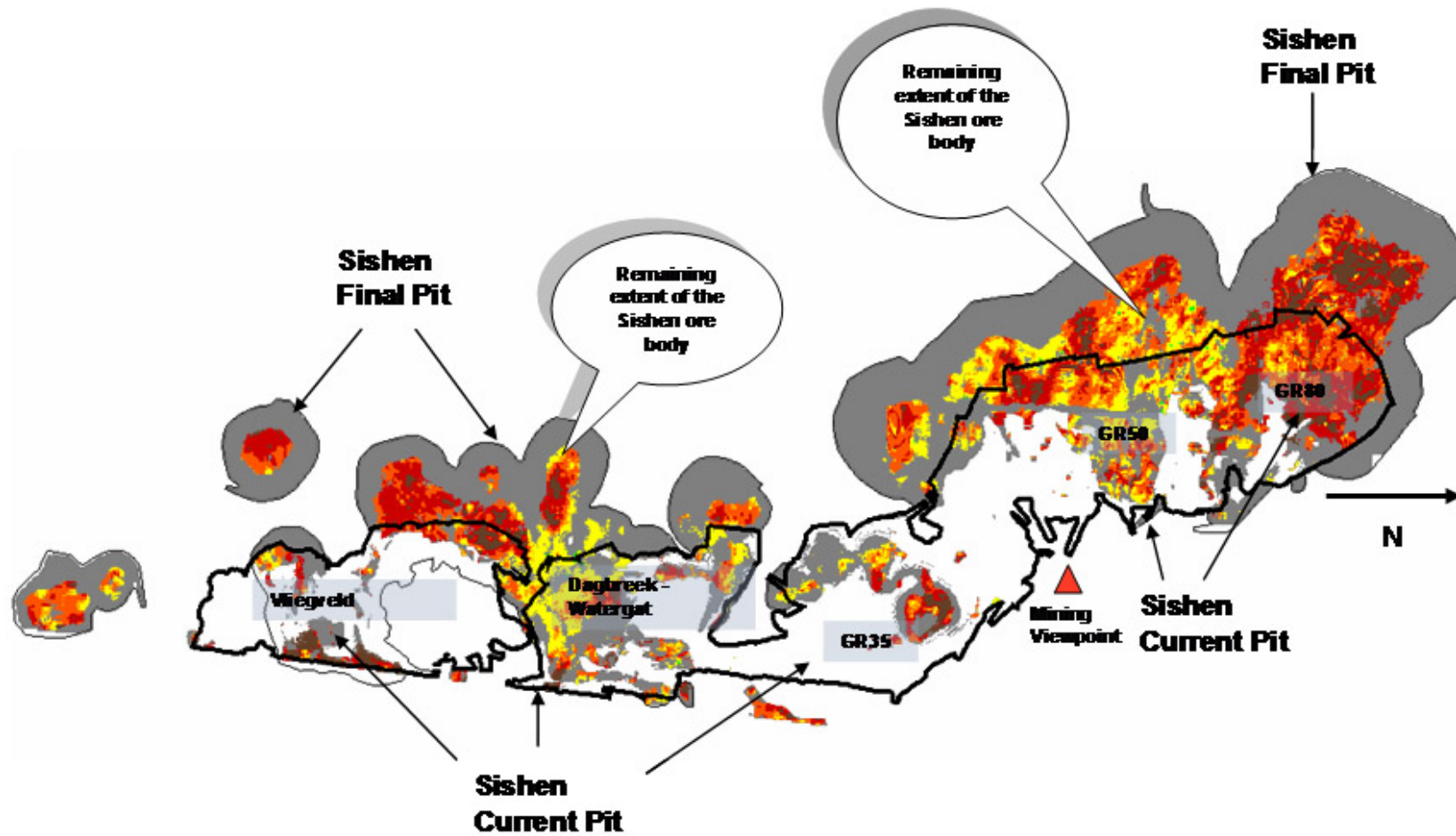


Safety: LTIFR Sishen and Safety Achievements 2009

LTIFR – Sishen Mine – 2010 – YTD



View of ore body

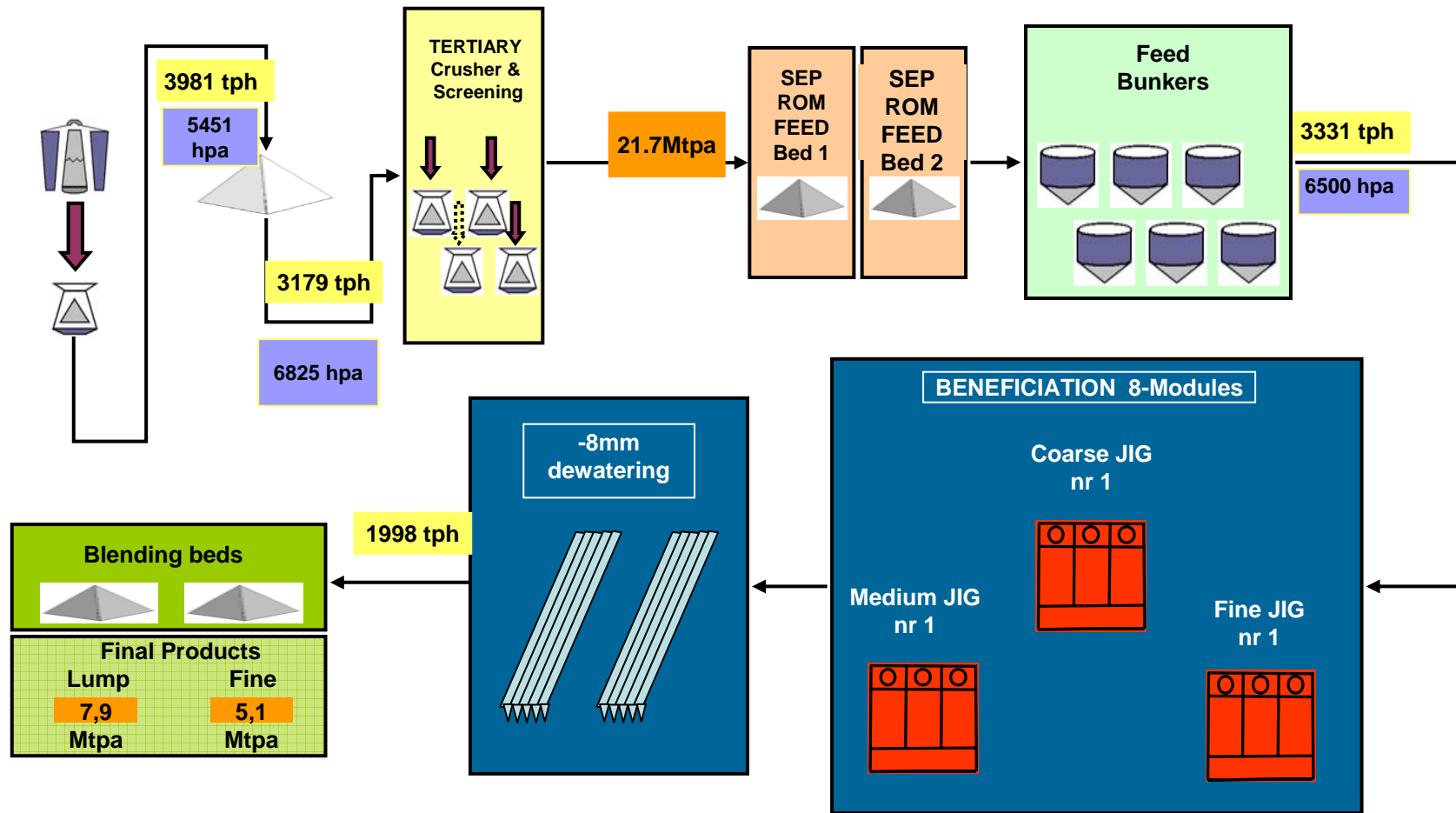


Summary of Production trends

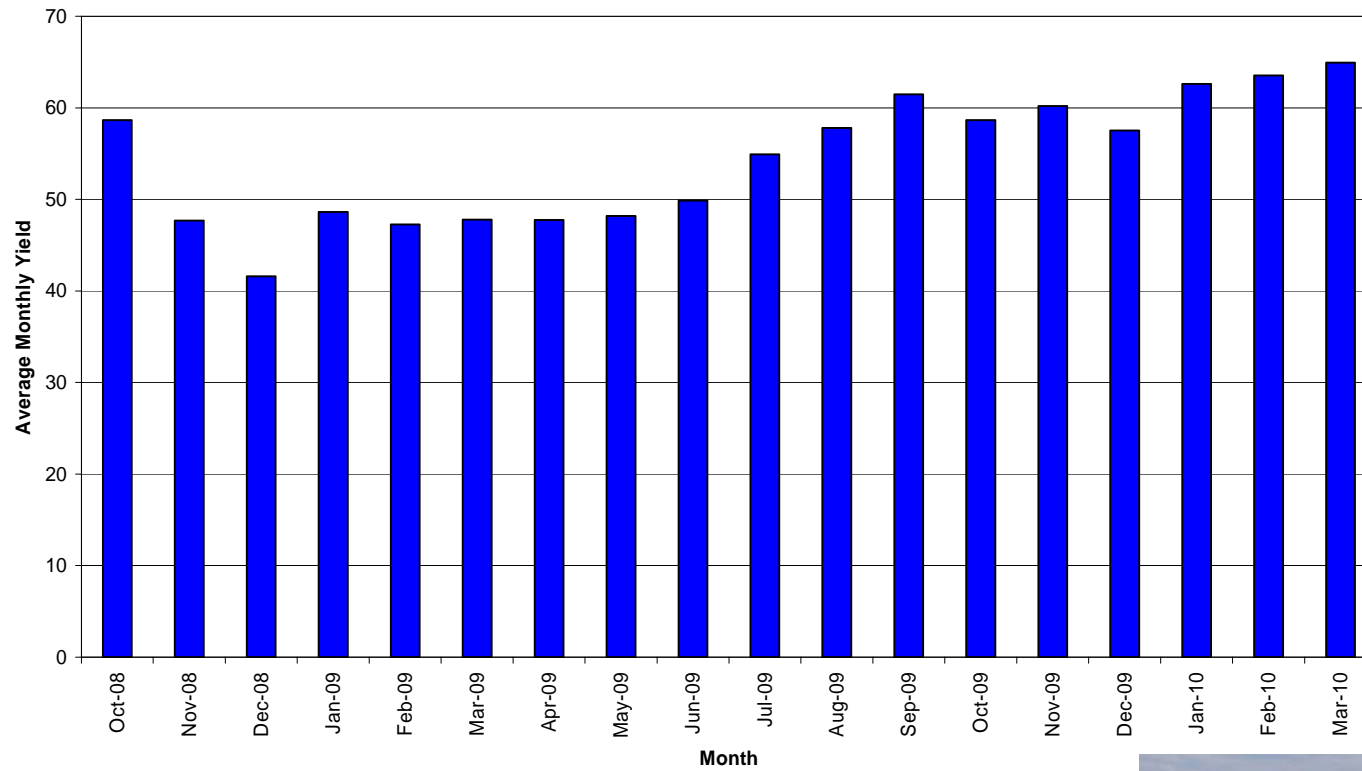
	2006	2007	2008	2009
Total Tons Handled (Including Contractors)	108,146,936	122,223,344	128,852,640	152,961,734
ROM to Crusher Production	32,252,855	32,965,188	44,282,717	52,169,049
Expit Waste	59,081,159	65,696,664	64,207,926	81,266,739
Expit Stripping Ratio	1.902	1.713	1.440	1.758
Resource (Mt)	691.5	1,316.00	1,565.30	1,362.10
Reserve (Mt)	1,053.80	1,032.50	956.9	911.5
Truck Fleet (Primary Equipment)		55	55	62
Shovel Fleet (Primary Equipment)		15	14	16

	2006	2007	2008	2009
Production				
DMS	28,691,977	29,550,673	28,394,804	28,957,233
JIG		172,928	4,746,532	10,430,445
Additional			897,270	
Total Production	28,691,977	29,723,601	34,038,606	39,387,678

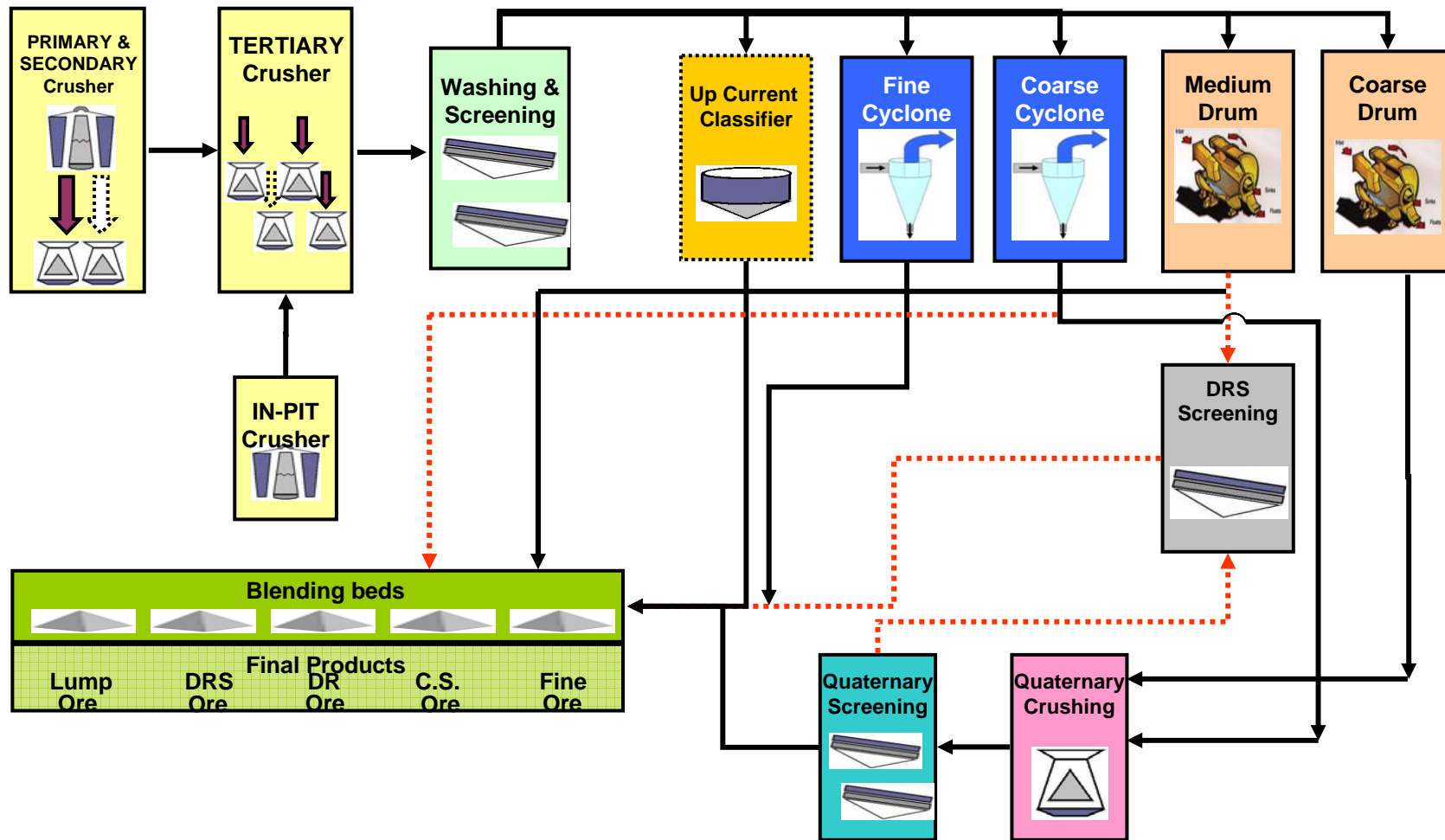
Jig Plant Flow Diagram



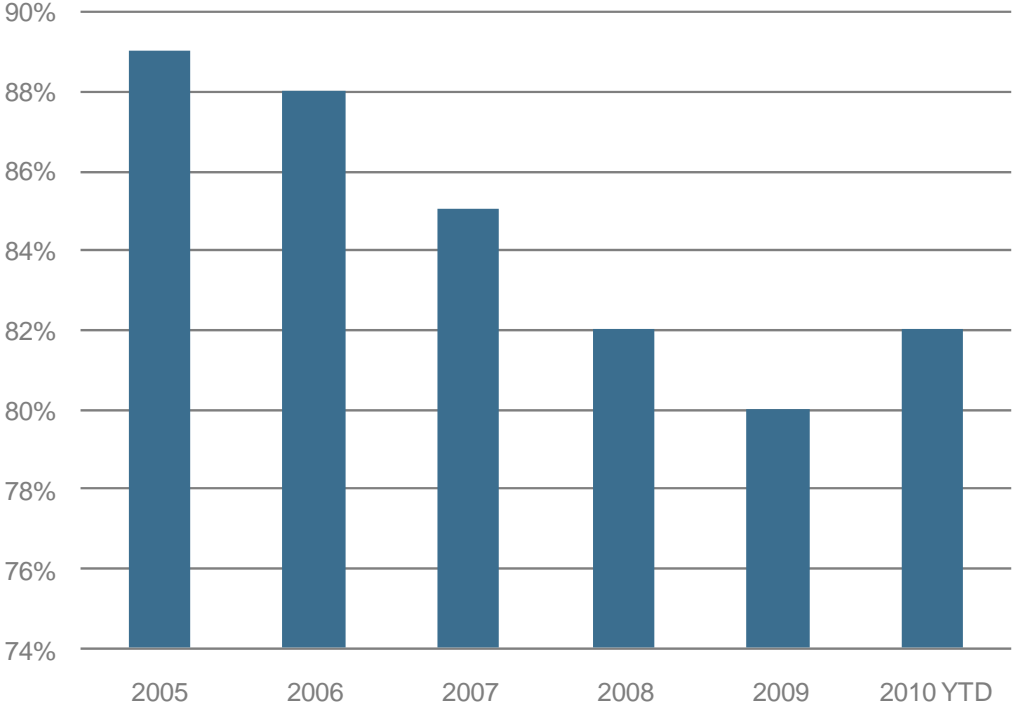
Monthly Jig Plant Yield



DMS Plant Flow Diagram



Average Yield DMS 2005 to 2009



Asset Optimisation

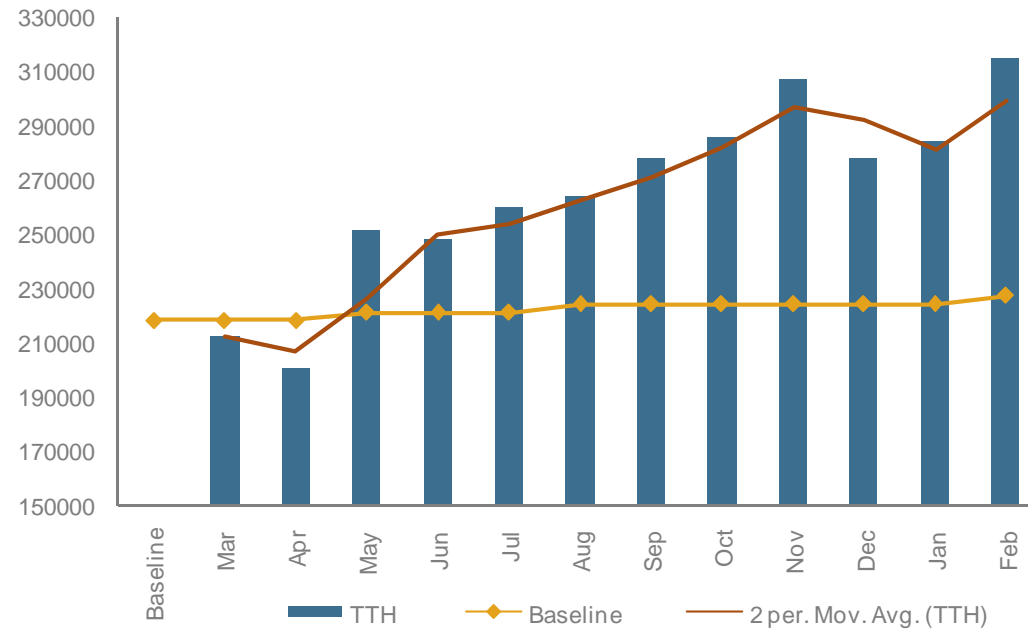
Project Bokamoso: Initial achievements

	KPIs	Baseline	February 2010 performance	% improvement vs. baseline
Trucks and Shovels	Daily tonnes handled	218kt	305kt	↑ +40
	OEE	51%	64.8%	↑ +27
	Mean time to repair (shovels)	2.39 hours	1.7 hours	↓ -29
Drilling and Blasting	Daily metres drilled	1558m	2454m	↑ +57
	OEE	39%	48.1%	↑ +23
Jig Plant	Daily ROM stacked	58kt	61kt	↑ +5



Asset Optimisation

Project Bokamoso: Initial achievements



Social and Community Development Initiatives



Education

- Whole school development
- Teacher development
- Integration of SD into HR interventions
- Rural libraries
- Early Childhood Development

Multipurpose Skills Training Centre

- Enterprise development: training, mentoring, support
- Various skills programmes
- Community access (rural)

Health

**2010:
Priorities**

SLP

- Delivering long term sustainable value

SIOC Community Development Trust

- Alignment
- Partnerships

Small business Start-up Hubs

- Expand Sishen Hub
- New business hubs at Thabazimbi and Kolomela
- Resourcing the hubs

