

Investor and Analyst Site Visit

12<sup>th</sup> April 2010



## Agenda

- Our Values
- Management Team
- Orientation
- Overview
- Safety
- Mining
- Concentrator
- Social Responsibility
- Financial Highlights
- Conclusion



**Safety**



**Honesty &  
integrity**



**Deliver on  
promises**



**Team  
work**



**Caring**



**Passion  
&  
pride**

M  
i  
n  
i  
n  
g



**William Matlhope**  
Mng Engineering



**Bertus Schoeman**  
Mng Engineering Projects



**Hendrik v Niekerk**  
Production Mng



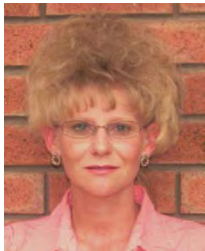
**Shela Ledwaba**  
HR Mng



**Ted Muhajir**  
General Manager



**Vijay Kumar**  
MTS Mng



**Wanda v Zyl**  
Protection Serv Mng



**Tumi Mbatha**  
Mng Finance



**Frank Pieterse**  
SHE Mng



**Thembisile Nkadimeng**  
Communities

C  
o  
n  
c  
e  
n  
t  
r  
a  
t  
o  
r



**Barry Davis**  
Senior Concentrator Mng



**Manie Potgieter**  
North Concentrator Mng



**Ashina Balram**  
South Concentrator Mng

- Over 150 Years mining experience
- Global management Experience
- Over 50% HDSA
- 40% Women



# Orientation

# Locality of Mogalakwena Platinum Mine



- Largest Open-pit Platinum Mine in the world
- Medium-size mature open pit operation, capable of breaking and moving over **100Mt** of hard rock.
- Largest hydraulic shovels in the world.
- Some of the largest trucks in Africa.
- Highest Basket price in AP.
- Lowest operating cost per ton milled.
- Building up to 400,000 oz capacity.

- Ore Reserves > 500Mt
- Measured & Indicated Ore Resources > 1,106 Mt
- LOM > 55 Years
- +1.6 Million Fatality free shifts.
- 4 LTI's for the year 2009.
- Winner of Anglo Platinum Environmental award(2009).
- Comprehensive community engagement and development programme.
- > 95 % of employees from within 50 km radius.
- Water availability

- Mogalakwena: embedded flexibility
  - Acceleration / Deceleration
  - Low cost operation
  - Highest basket price

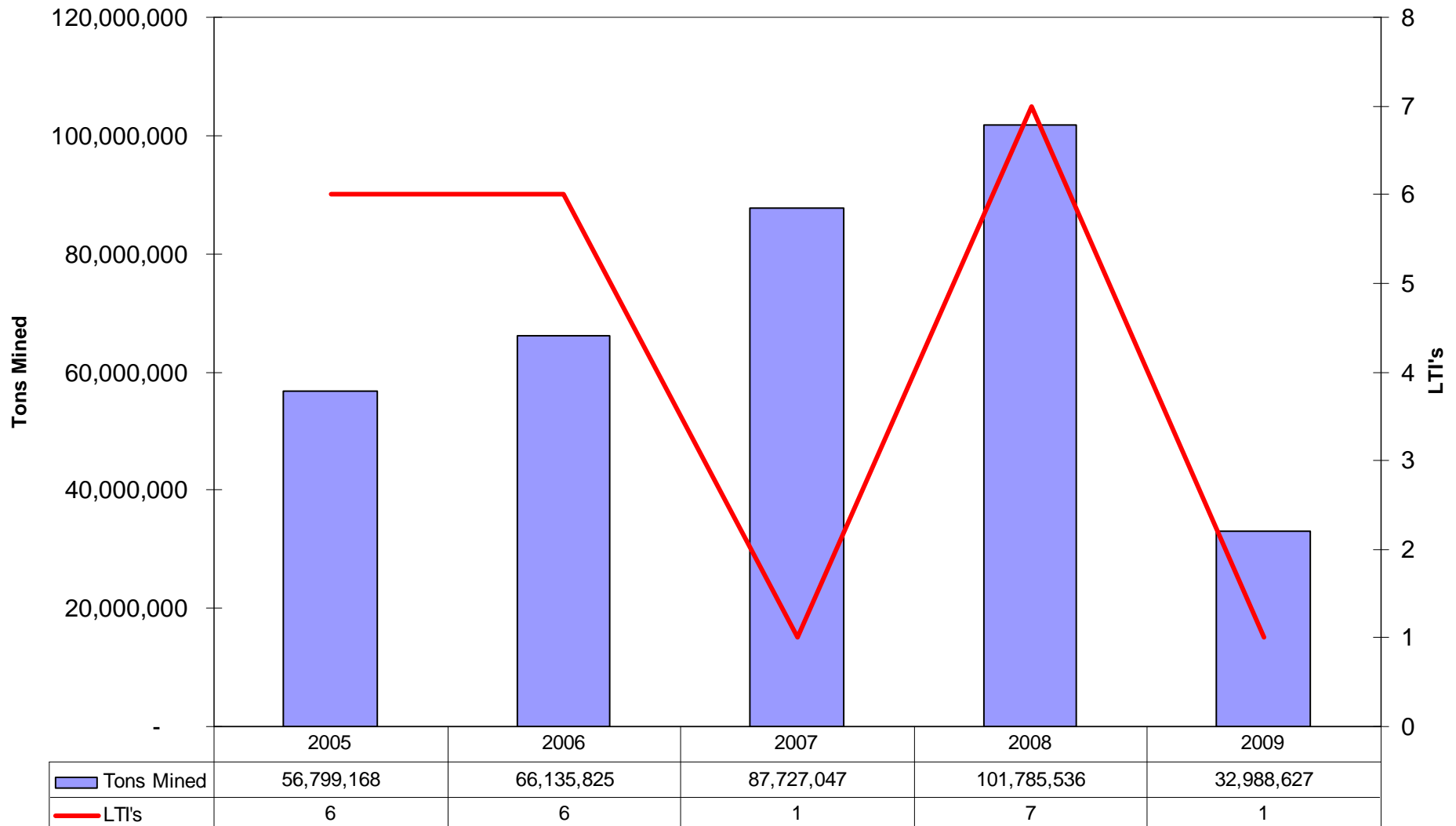


**SAFETY**

Concentrator LTI's versus Tons Milled



Mining LTI's versus Tons Mined





# Mining



ANGLO  
PLATINUM

# Mogalakwena Platinum Mine – Mining Lease Area



- Strike Length – 21km
- Dip – 42°- 45°
- Depth – Outcrop to +500masl
- Ore Width – 20 – 80m
- Total Conc. Capacity – 985 ktpm

Reef	2009		2008	
	Tonnes (Mt)	Grade (g/t 4E)	Tonnes (Mt)	Grade (g/t 4E)
Platreef Ore Reserves				
Proved	317.4	3.28	274.5	3.21
Proved Primay Ore Stockpiles	16.6	2.65	20.6	2.58
Probable	174.6	3.12	112.8	3.56
	<b>508.6</b>	<b>3.20</b>	<b>407.9</b>	<b>3.27</b>
Platreef Ore Resources				
Measured	192.9	1.95	152.4	1.85
Indicated	915.0	2.14	898.8	2.13
Inferred	1,160.6	1.89	1,331.3	1.89
	<b>2,268.5</b>	<b>2.00</b>	<b>2,382.5</b>	<b>2.00</b>

## Pit Layout - Sandsloot



- Remaining life of pit : 1 years
- Bench height 15m
- Current depth 255m
- Planned depth 270m
- Current length 1,700m
- Current width 600m
- Extension under review

## Pit Layout – Zwartfontein South



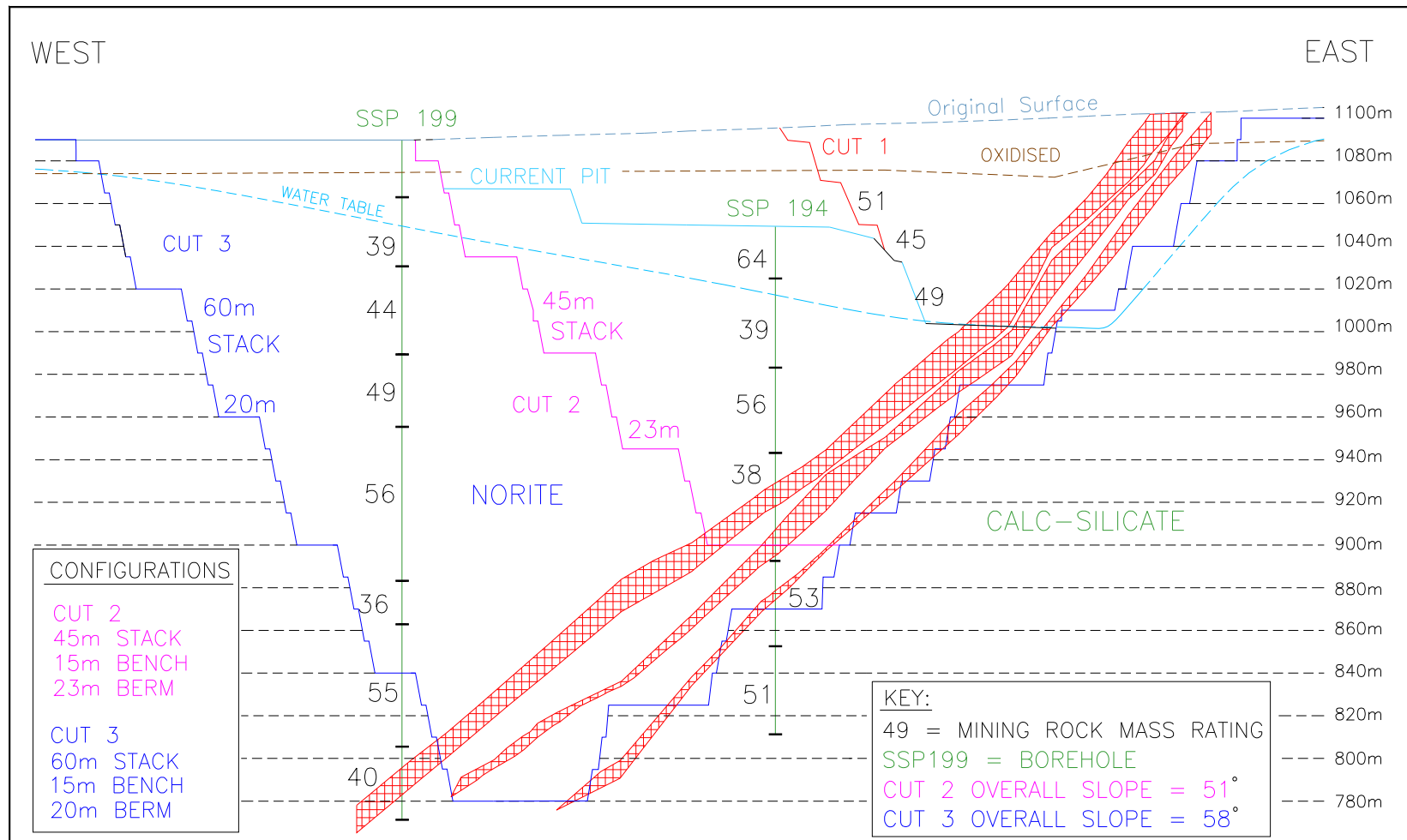
- Remaining life of pit : 21 years
- Bench height 10m
- Current depth 120m
- Planned depth 260m
- Current length 1,500m
- Current width 450m

## Pit Layout – Mogalakwena

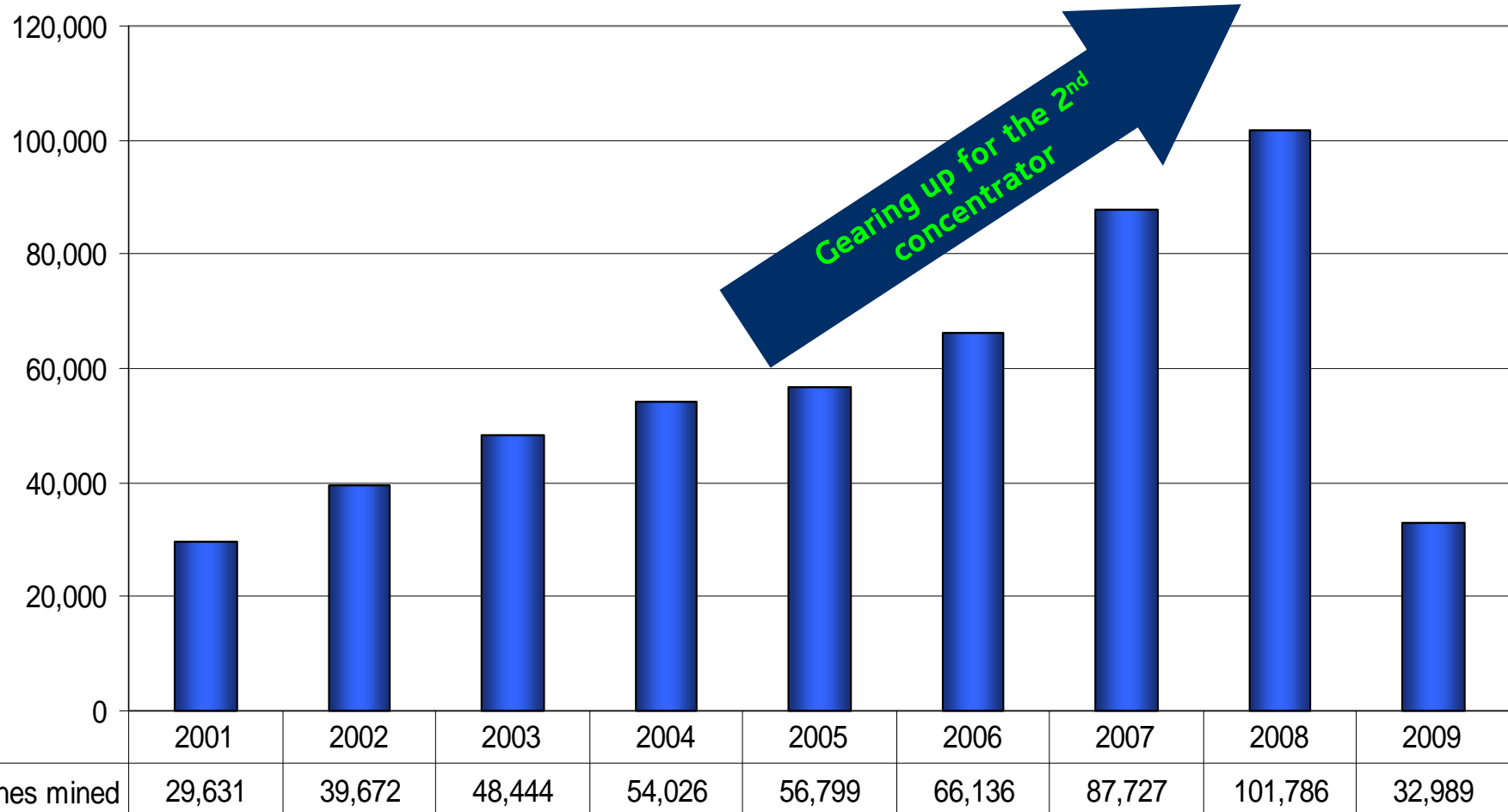


- Remaining life of pit +39 years
- Bench height 15m
- Current depth 100m
- Planned depth 500m
- Current length 1500 m
- Planned length 7,000m
- Current width 350m
- Planned width 1,200m

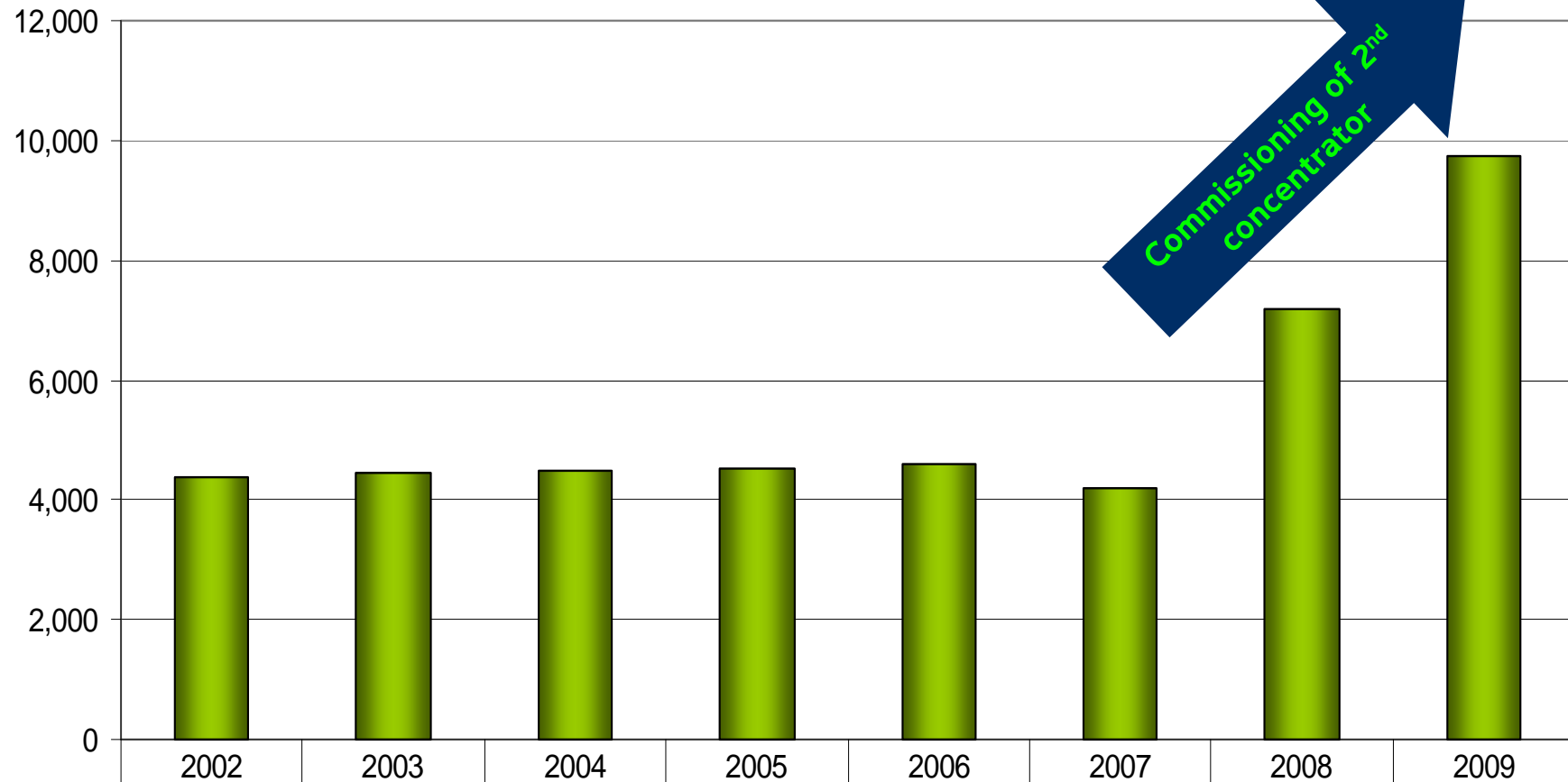
- Delayed Relocation: Negotiation at advanced stage, Plan B in place.
- Lightning: Advance warning systems.
- Slope Stability: Radars etc
- Trackless Mobile Machinery: Collision Avoidance System.
- Blasting/Explosives: Electronic detonators etc.



## Tonnes mined



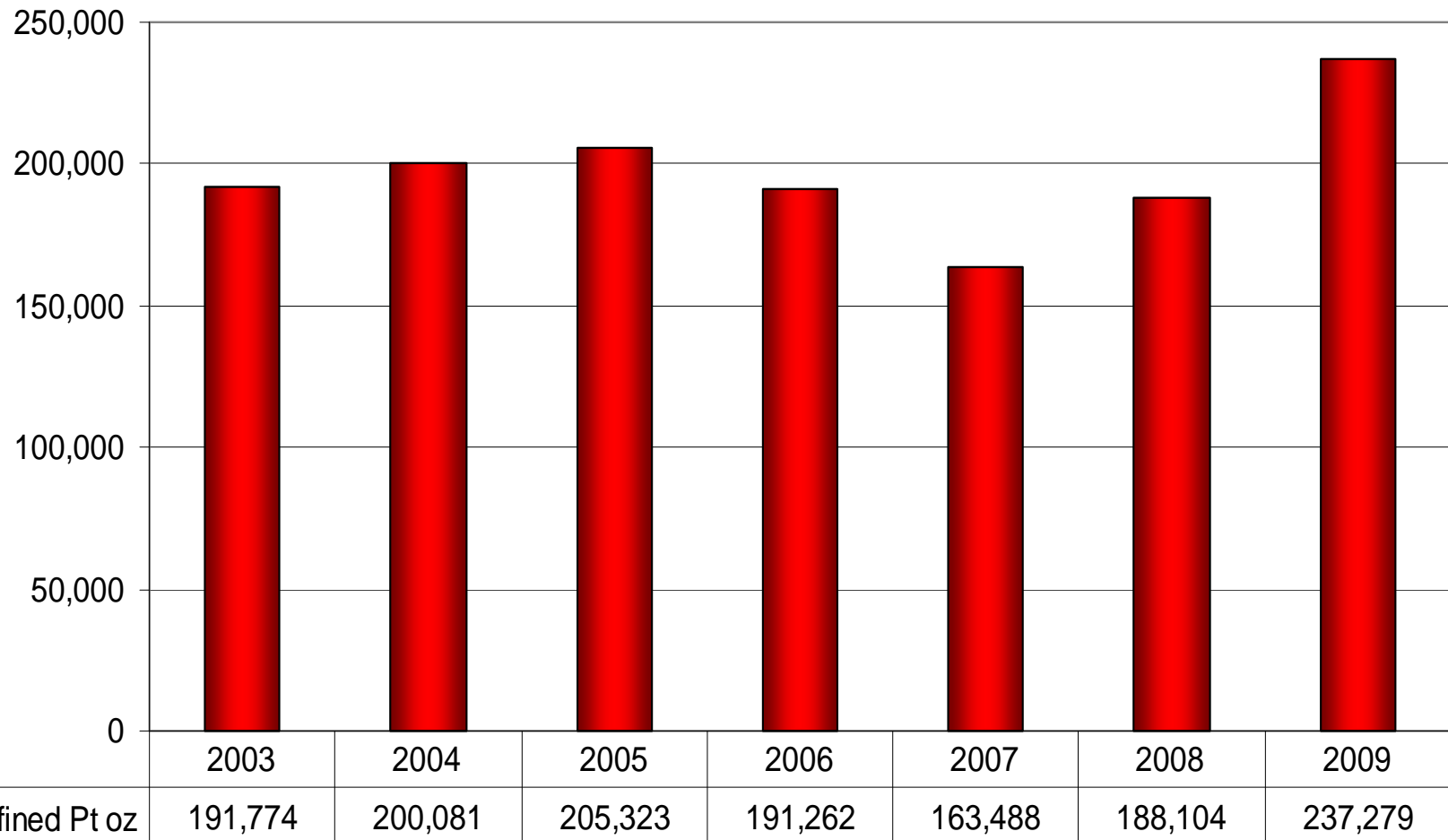
Tonnes milled



■ Tonnes milled	4,375	4,465	4,470	4,535	4,595	4,187	7,180	9,722
-----------------	-------	-------	-------	-------	-------	-------	-------	-------

# Equivalent Refined Platinum Ounces

Equivalent Refined Pt oz



## 9 Hydraulic Shovels



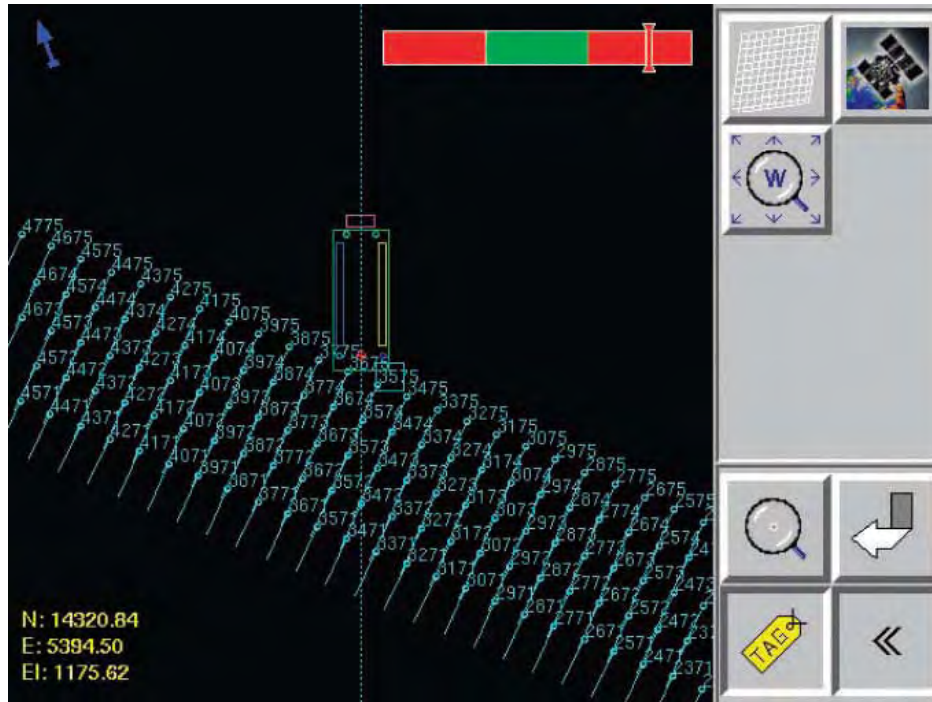


- 49 Trucks

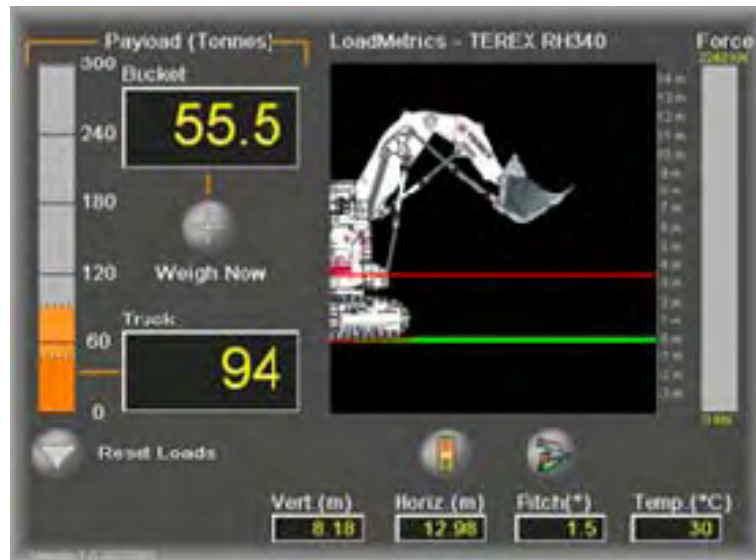
# In-pit Surveillance



## Aquila



## Load Metrics



## Radars



## HPGPS





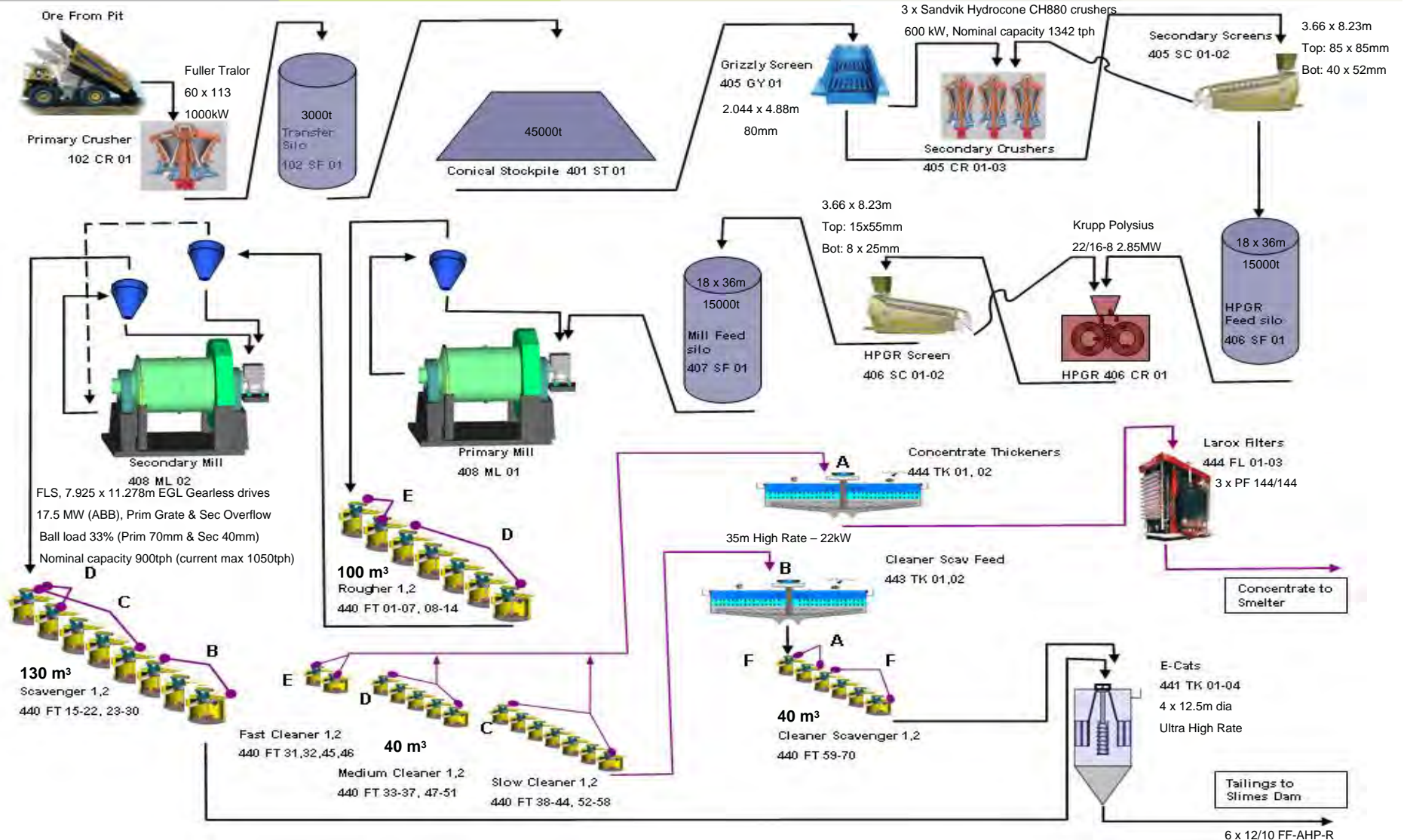
# Concentrator



# Mogalakwena North Concentrator



# Process Flow Diagram



- **Biggest single stream Platinum Concentrator in the World (600ktpm).**
- **Decision to build a single stream plant required some ground-breaking technology.....**
- **First:**
  - HPGR installation for a platinum ore body
  - Gearless drive mills in Anglo Platinum
- **Biggest:**
  - Primary Gyratory crusher 60” with a 1000kW motor
  - Ball Mills in the world 26’ $\varnothing$  x 37.6’ EGL with 17.5MW gearless drive
  - Centrifugal blower installation in Africa
  - Mill discharge pumps in SA – 1,45MW motors with gearbox drive
  - HPGR in Africa with the largest installed power in the world (2 x 2.85MW)

- Ultra high rate thickeners for tailings disposal
- High efficiency motors installed
  - More work per unit of electricity consumed
- Day-night switches for lights
- “Ready to float” material can bypass primary milling stage:
  - Creates additional primary milling capacity or save energy on primary milling stage
  - No energy waste to pass sufficiently liberated material through primary mill (incl. metallurgical benefits)



Social Economic Development

- Social Economic Assessment Tool in place
- Social and Labour plan in place
- Strong focus on Sustainable / Equitable community projects



		2005	2006	2007	2008	2009
Average Pt basket price (Mogalakwena Mine)	R/oz	10,574	16,626	21,046	25,046	19,000
Average Pt basket price (Anglo Platinum)	R/oz	8,871	13,852	18,167	22,348	14,115
Cash-on-mine cost / Ton Milled (Mogalakwena Mine)	R/ton	219	208	282	288	196
Cash-on-mine cost / Ton Milled (Anglo Platinum)	R/ton	273	296	388	475	453

- Creation of low cost, flexible operation over the last 5 years.
- Ability to respond to market condition in shortest time.
- Constantly evaluating growth opportunities within the group guidelines.



**Geared to deliver “Safe , Profitable  
Platinum”**