



De Beers Marine Namibia



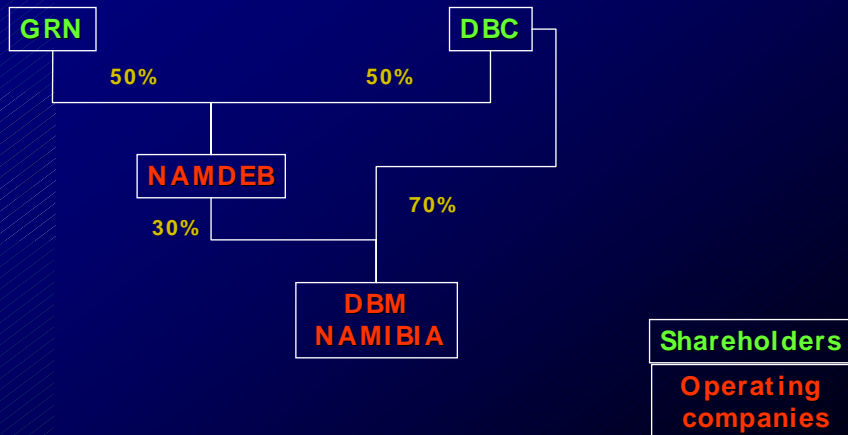
The journey continues...

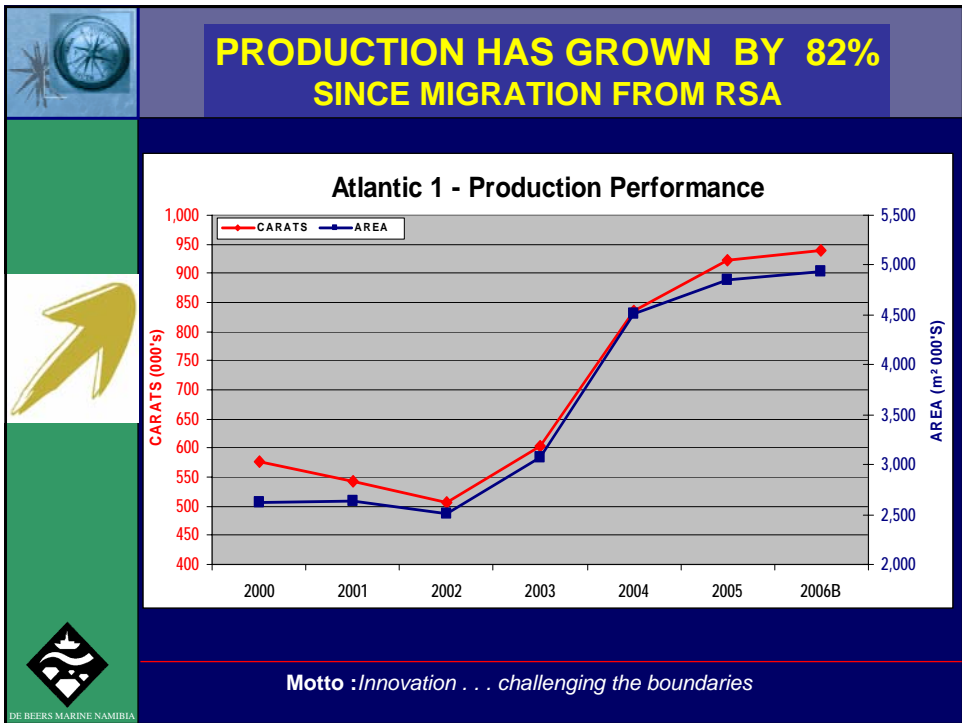
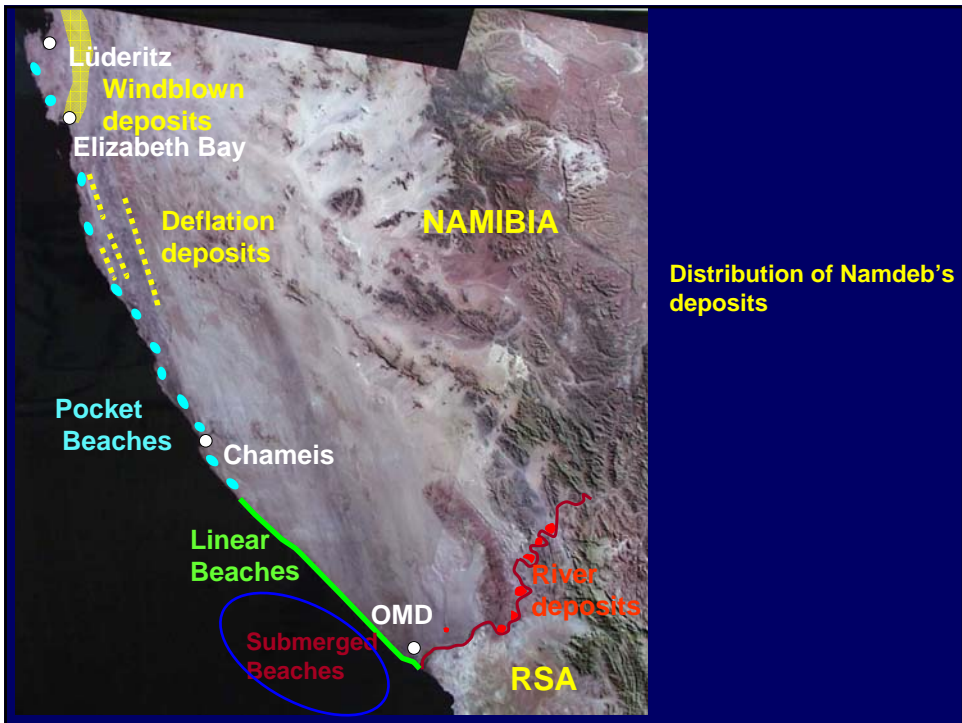


DE BEERS MARINE NAMIBIA

Mission : *To prospect for & mine marine diamonds in a sustainable manner to the benefit of our shareholders & stakeholders*

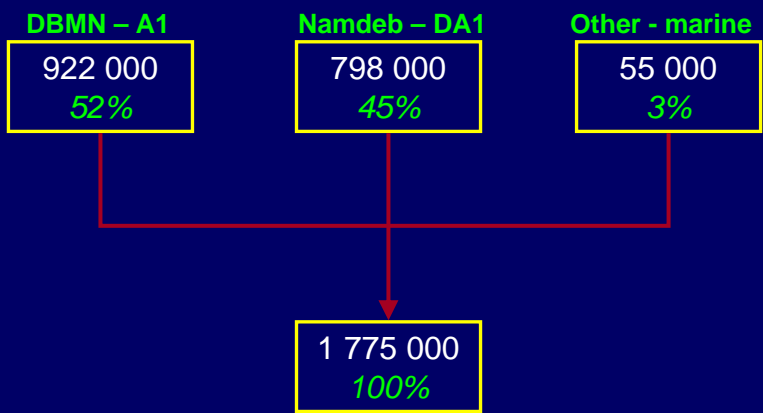
Shareholder Structure in Namibia







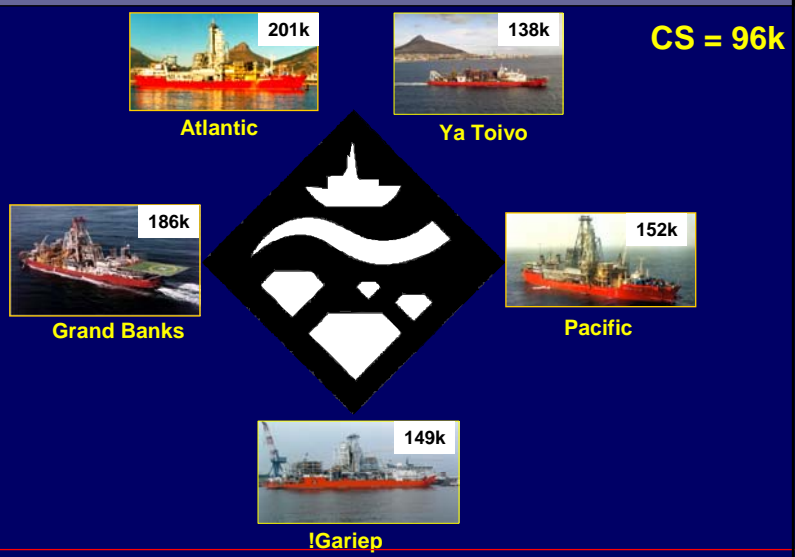
DBMN – LARGEST DIAMOND MINER IN 2005



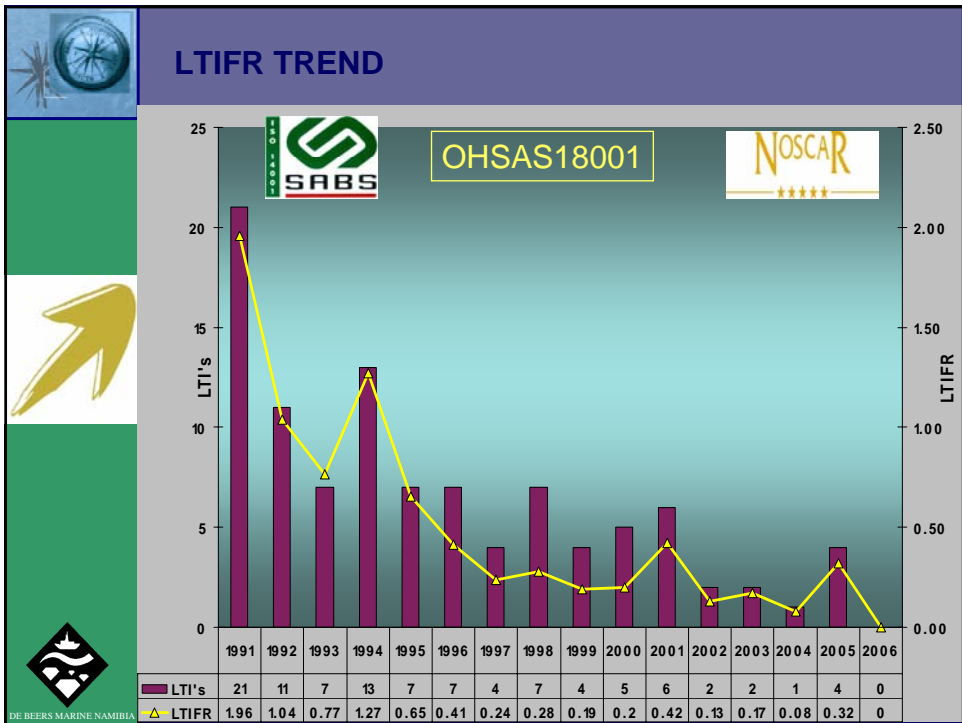
Motto : *Innovation . . . challenging the boundaries*



DBMN Fleet (2005 – 922 000 carats)



Vision : *The largest diamond miner in Namibia ...forever*



ENVIRONMENTAL RESEARCH FOCUS

TAILINGS PLUME

H₂S eruption
Luderitz

TOOL ACTION

NATURAL VARIABILITY

Orange River floods

	<h2>More than just a mining company</h2>				
	<p>Training & Development is an integral part of overall strategy to ensure a competent & skilled workforce, & to support AA.</p>				
	<ul style="list-style-type: none"> ▪ 605 permanent employees ▪ 70% Namibian 				
	<ul style="list-style-type: none"> ▪ N\$15 million on training per annum ▪ AA certified in 2003/4/5 ▪ Donations to the needy in the society 				
	<table border="0"> <tr> <td> Teamwork</td> <td> Integrity</td> <td> Excellence</td> <td> Respect</td> </tr> </table>	 Teamwork	 Integrity	 Excellence	 Respect
 Teamwork	 Integrity	 Excellence	 Respect		

	<h2>More than just a mining company</h2>					
	<h3>HIV/AIDS. RESPONSE</h3>					
	<ul style="list-style-type: none"> ▪ ART programme ▪ VCT programme ▪ Education campaign 					
	<p><i>Free for employees & their life partners</i></p>					
	<table border="0"> <tr> <td> Teamwork</td> <td> Integrity</td> <td> Excellence</td> <td> Respect</td> </tr> </table>		 Teamwork	 Integrity	 Excellence	 Respect
 Teamwork	 Integrity	 Excellence	 Respect			



Hope is Forever

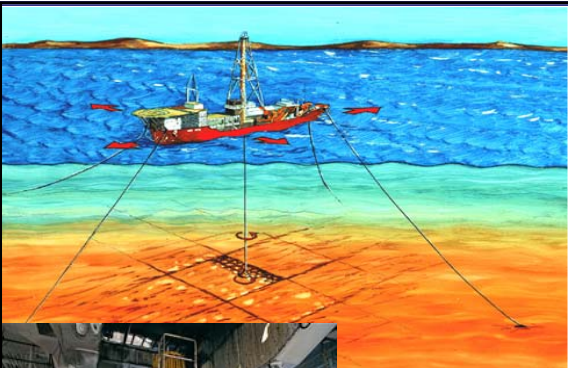
"The diamond business is a socially responsible and for this reason it is important that we focused on our social aspects. AIDS is a global health crisis and our responsibility as a responsible business is to support the fight against AIDS. We are committed to raising awareness and our employees will be supported in this regard. We are committed to providing a safe and healthy work environment for our employees and their life partners."

Care Rules
 www.diamonds.com/aidshelp



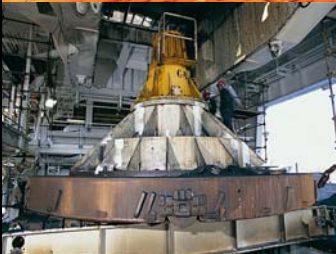
DE BEERS MARINE NAMIBIA

TOOL DEVELOPMENT & FUTURE CAPACITY BUILDING



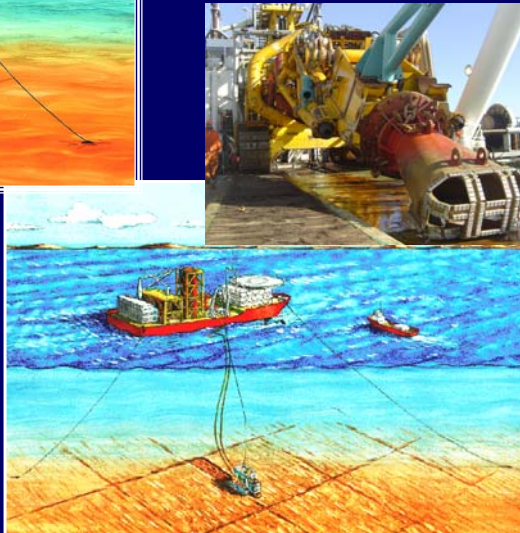
CRAWLER MOUNTED DREDGE

- Recent technology in Atlantic 1
- Ongoing incremental improvement



AIRLIFT DRILL-SHIP

- Known technology in Atlantic 1
- Ongoing incremental improvements
- Quantum improvement in 2005





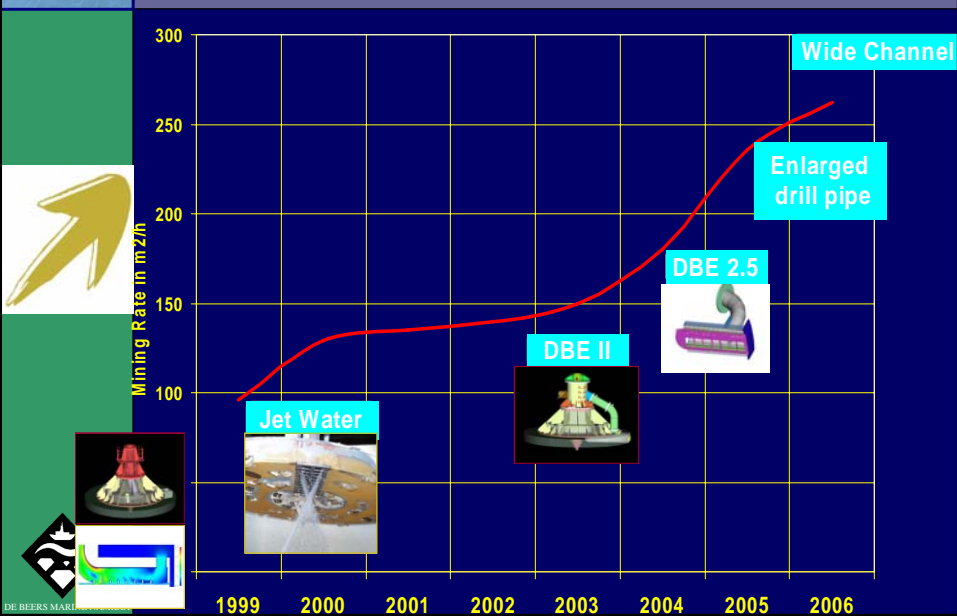
TRAILER SUCTION HOPPER DREDGE . . . future candidate?

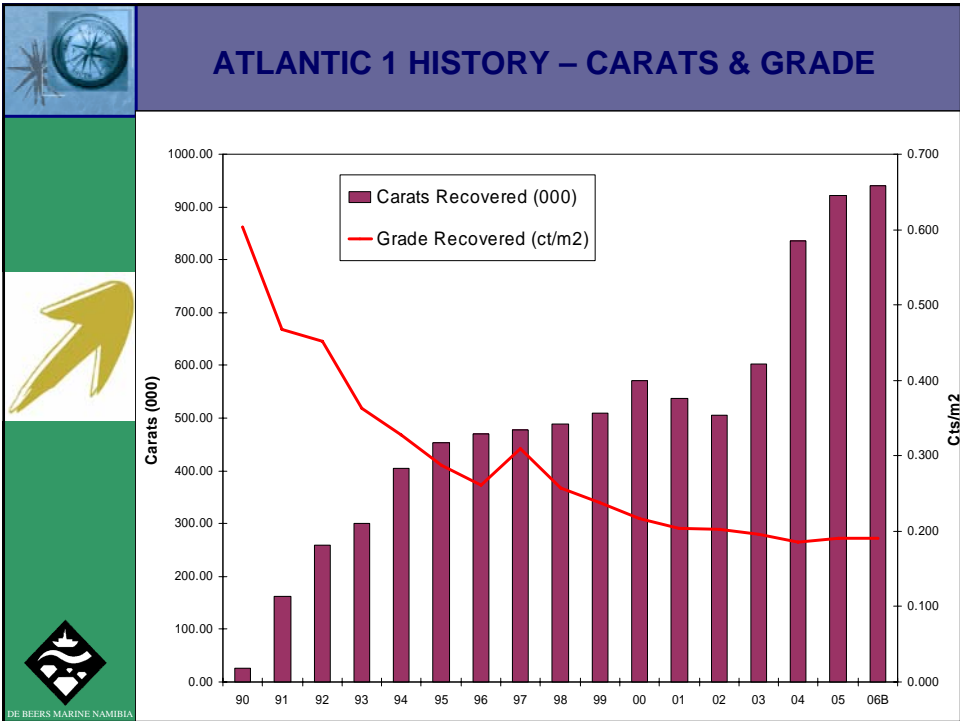
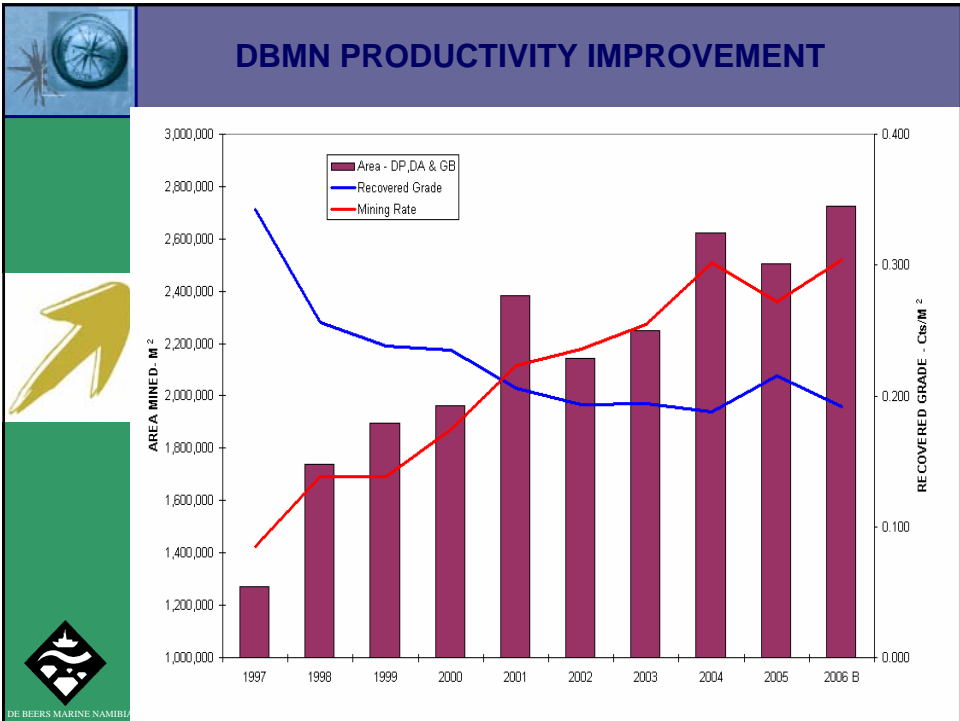


- New technology in Atlantic 1
- Quantum leap potential
- Chameis trial - Jan 2005
- Environmental sensitivity
- Trial mining in Atlantic 1- Q1 2006



DBMN RATE IMPROVEMENT HISTORY



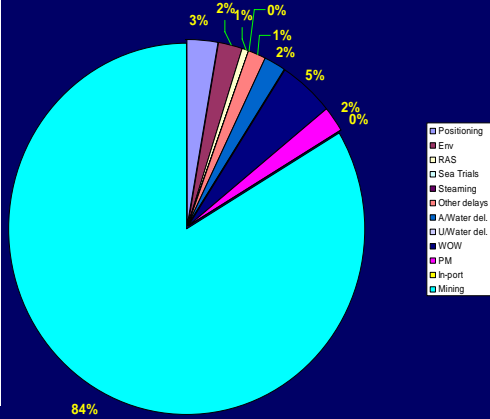




GRAND BANKS 2005 UTILISATION



	Hours	%
Positioning	248	3%
Env	198	2%
RAS	55	1%
Sea Trials	-	0%
Steaming	-	0%
Other delays	130	1%
A/Water del.	178	2%
U/Water del.	4	0%
WOW	452	5%
PM	185	2%
In-port	-	0%
Mining	7,452	84%
TOTAL	8,902	100%



DE BEERS MARINE NAMIBIA



RESOURCE GENERATION EFFORTS



GEOPHYSICAL SURVEY
N\$30m



SAMPLING
N\$113m



PRODUCTION
N\$1 377m



ENVIRONMENT
N\$3.9m

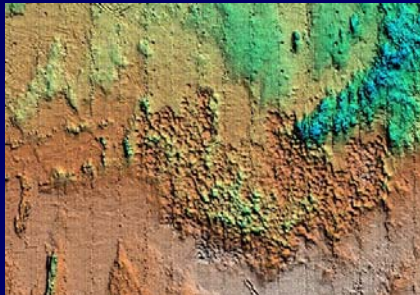
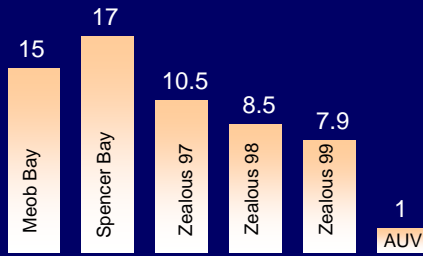


DE BEERS MARINE NAMIBIA

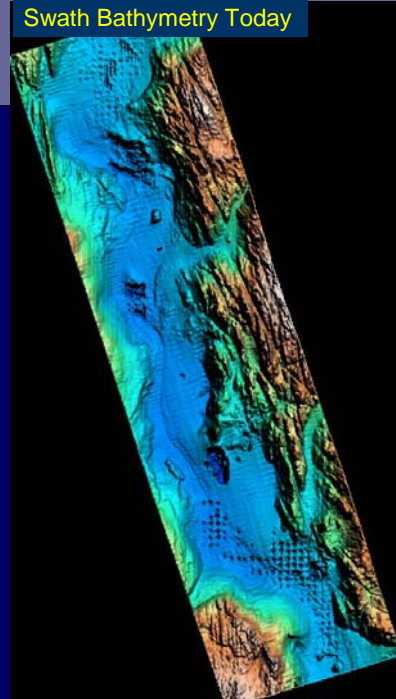
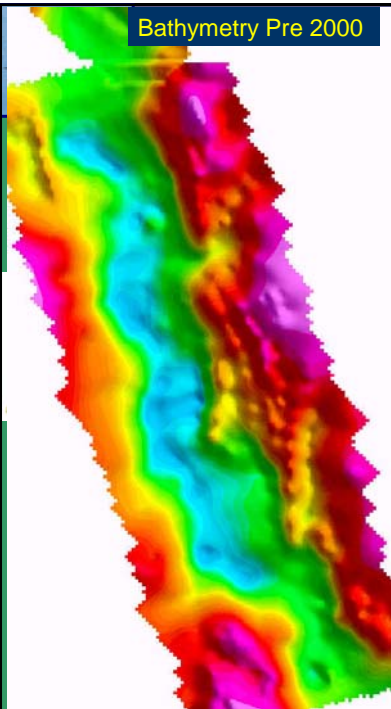


CHALLENGING THE LIMITS

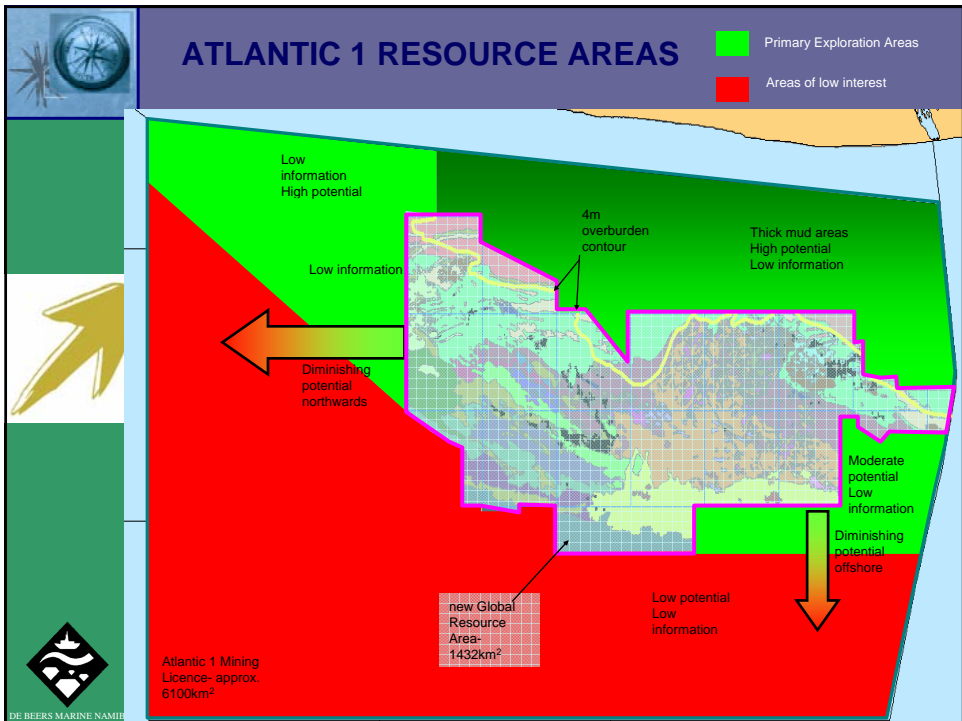
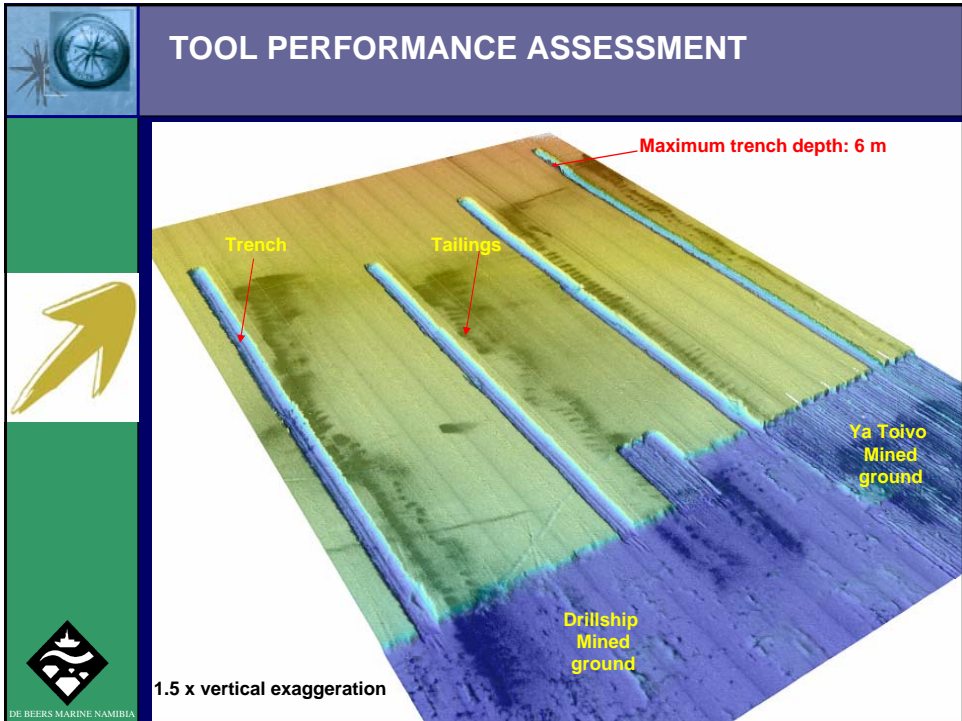
Days to complete a mine support survey



DE BEERS MARINE NAMIBIA



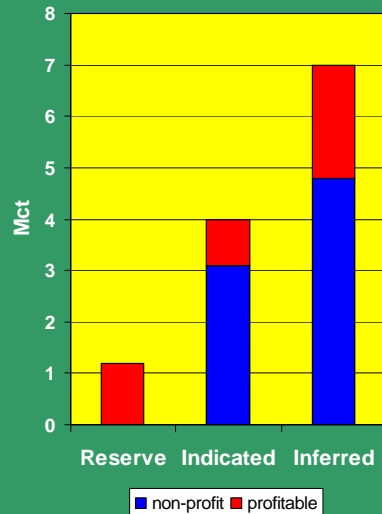
DE BEERS MARINE NAMIBIA



GLOBAL RESOURCE ESTIMATE - CALCULATIONS

Cut-off (cts/m ²)	Area (km ²)	Mcts	Ave grade (ct/m ²)
0.000	1,402	63.5	0.045
0.025	868	60.0	0.069
0.050	574	52.2	0.091
0.075	385	43.7	0.113
0.100	263	35.9	0.137
0.125	185	29.6	0.160
0.150	133	24.4	0.184
0.175	98	20.3	0.208
0.200	75	17.2	0.231
0.225	58	14.8	0.254
0.250	46	12.8	0.277
0.275	37	11.2	0.299
0.300	30	9.7	0.321
0.325	24	8.4	0.344
0.350	20	7.4	0.368
0.375	17	6.6	0.390
0.400	15	6.0	0.410
0.425	13	5.4	0.430
0.450	11	4.9	0.450
0.475	9	4.4	0.474
0.500	8	4.0	0.494

Profitability of Present Resource - July 2005



Investing in the future ... Strategic projects

Existing Fleet (N\$889m +163k cts pa)

- DP, DA, GP Conversion
- 500NB to 600NB
- Treatment Plant replacement
- Power generating upgrade

New Vessels

- AMV2 - N\$1.4b + 392k cts pa
- Dredge Trial

R & D (N\$48m)

- AMS Phase 2
- Technology Development

Future Vessels

- NEV
- AMV3



DE BEERS MARINE NAMIBIA



Teamwork



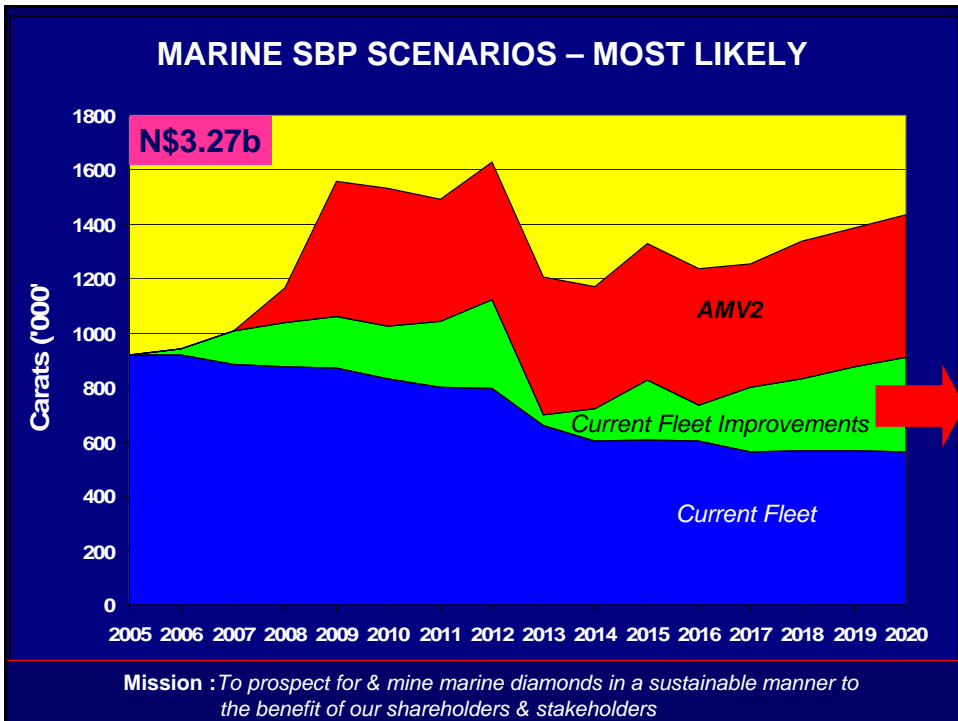
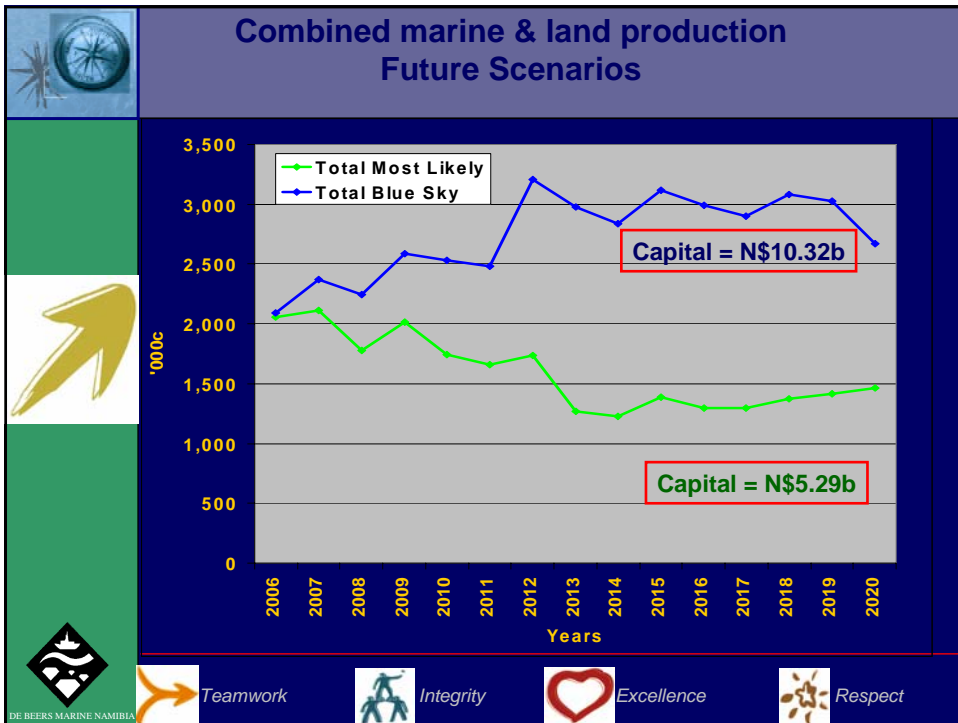
Integrity

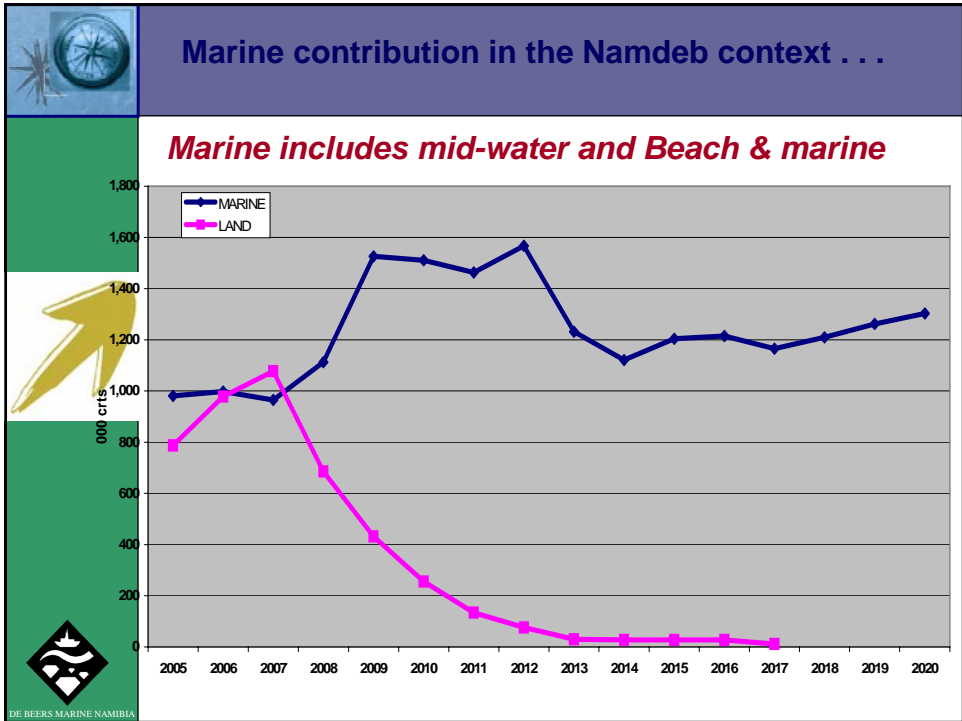
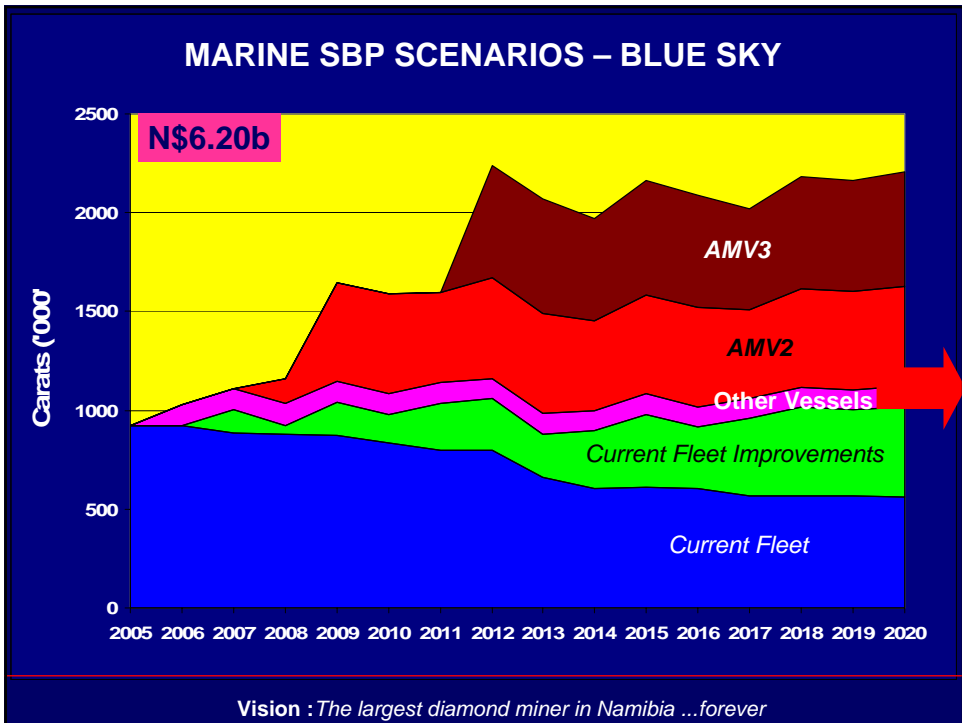


Excellence



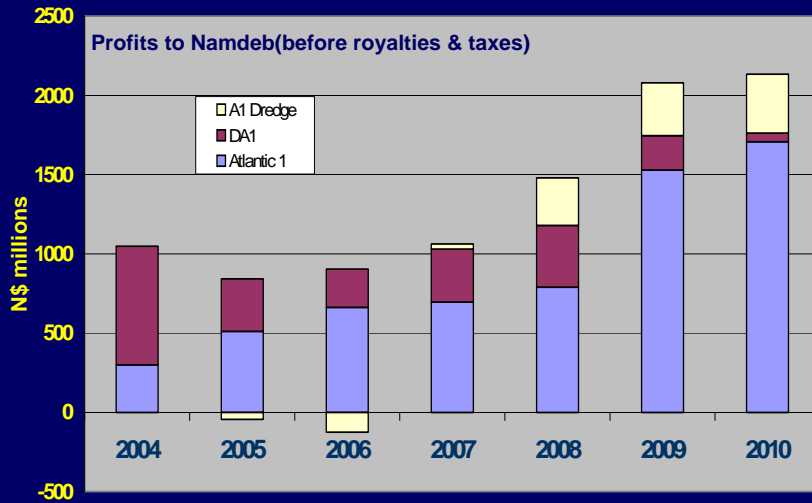
Respect







While land production continues for years, note profit declines and marine potential growth



RISKS & CHALLENGES



Resource development: suitable ground & grade

Skills to meet expansion

US\$/N\$ exchange rate

Financing for AMV2/3

Midwater

DBMN runs a full active risk management programme

Motto : *Innovation . . . challenging the boundaries*



BHAG

Short term

- N\$250 million profit to Namdeb for 2005
Was exceeded. Actual = N\$338m



Medium term

- 1 million carats from existing fleet by 2007

Long term

- 10 million carats (Sea + Land) 2006-2010



DE BEERS MARINE NAMIBIA




Motto : *Innovation . . . challenging the boundaries*



DE BEERS MARINE NAMIBIA

CONCLUSION

	<h2>STRATEGIC ALIGNMENT</h2>	
	<p style="text-align: center;">GRN</p> <p style="text-align: center;"><u>Vision 2030</u></p> <p style="text-align: center;">6% ANNUAL ECONOMIC GROWTH</p> <p>Drivers:</p> <ul style="list-style-type: none"> • Education & skills development • Infrastructure • Fiscal policy • Beneficiation • New mines 	<p style="text-align: center;">De Beers</p> <p style="text-align: center;"><u>Chapter 2</u></p> <p style="text-align: center;">US\$2.4 BILLION EBITDA BY 2009</p> <p>7 strategic levers:</p> <ul style="list-style-type: none"> • Demand growth • PPG • Value creation through the DTC • Cost efficiencies • Partnerships • Consumer confidence & reputation • Organisational effectiveness
	<p>DBMN & Namdeb BHAG: 10 million carats by 2010</p>	
<p>People PPG Resource Development</p>		<p>Communications</p>
<p><i>Motto : Innovation . . . challenging the boundaries</i></p>		

	<h2>Sustainability</h2>	
	<ul style="list-style-type: none"> ■ Risk management programme in place ■ Annual SBP & reviews – to 2020 ■ Subscribes to and complies with BPP ■ Certifications: ISO14001, OHSAS18001, ISM, NOSA ■ O & C Review 	
	<p><i>Vision :The largest diamond miner in Namibia ...forever</i></p>	

The journey continues...

*Thank you
Questions/discussions*

