



Venetia Mine

Welcomes

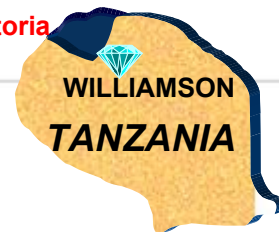
FUND MANAGERS DELEGATION

A GENERAL OVERVIEW

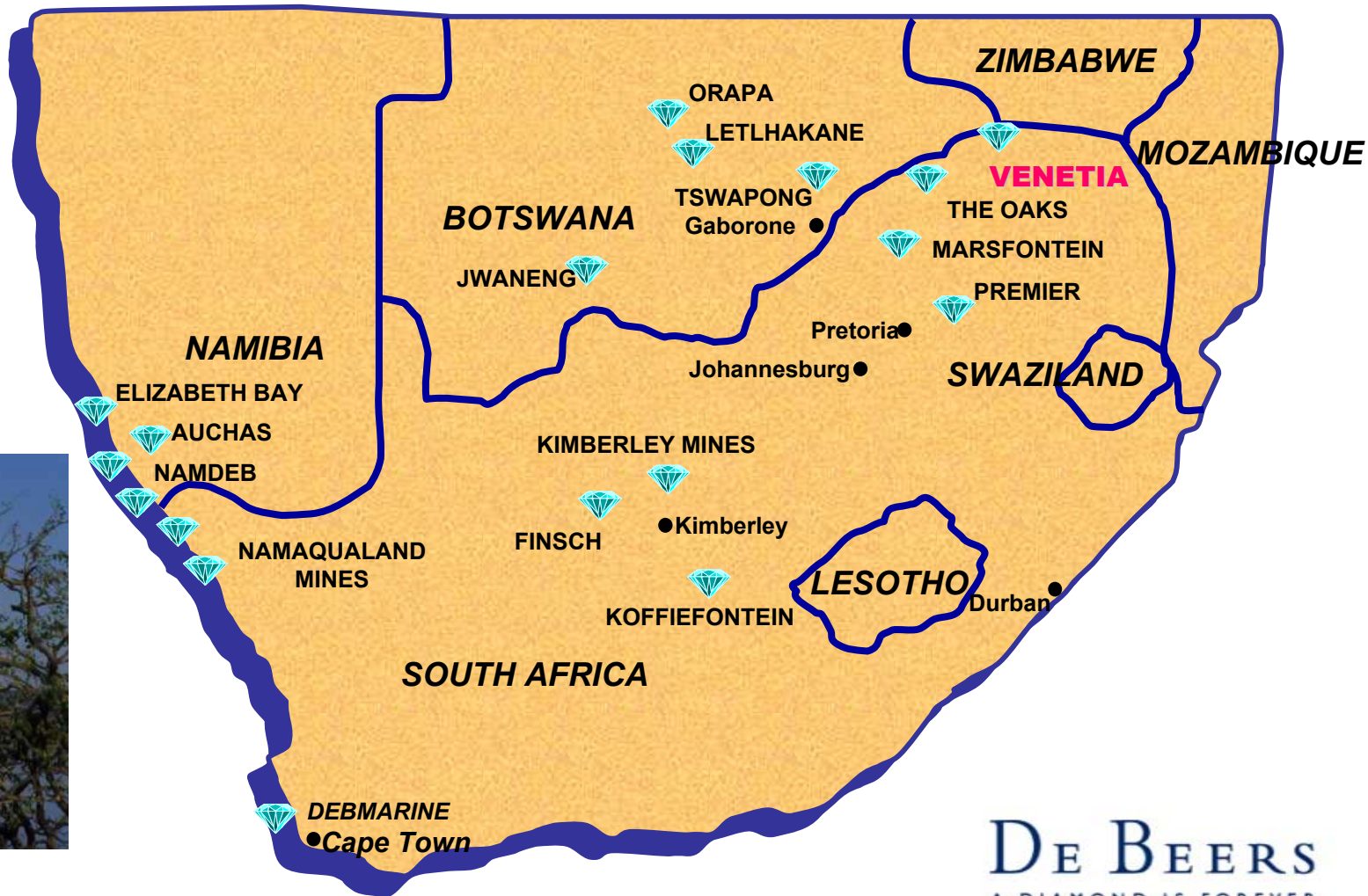


LOCATION

Lake Victoria

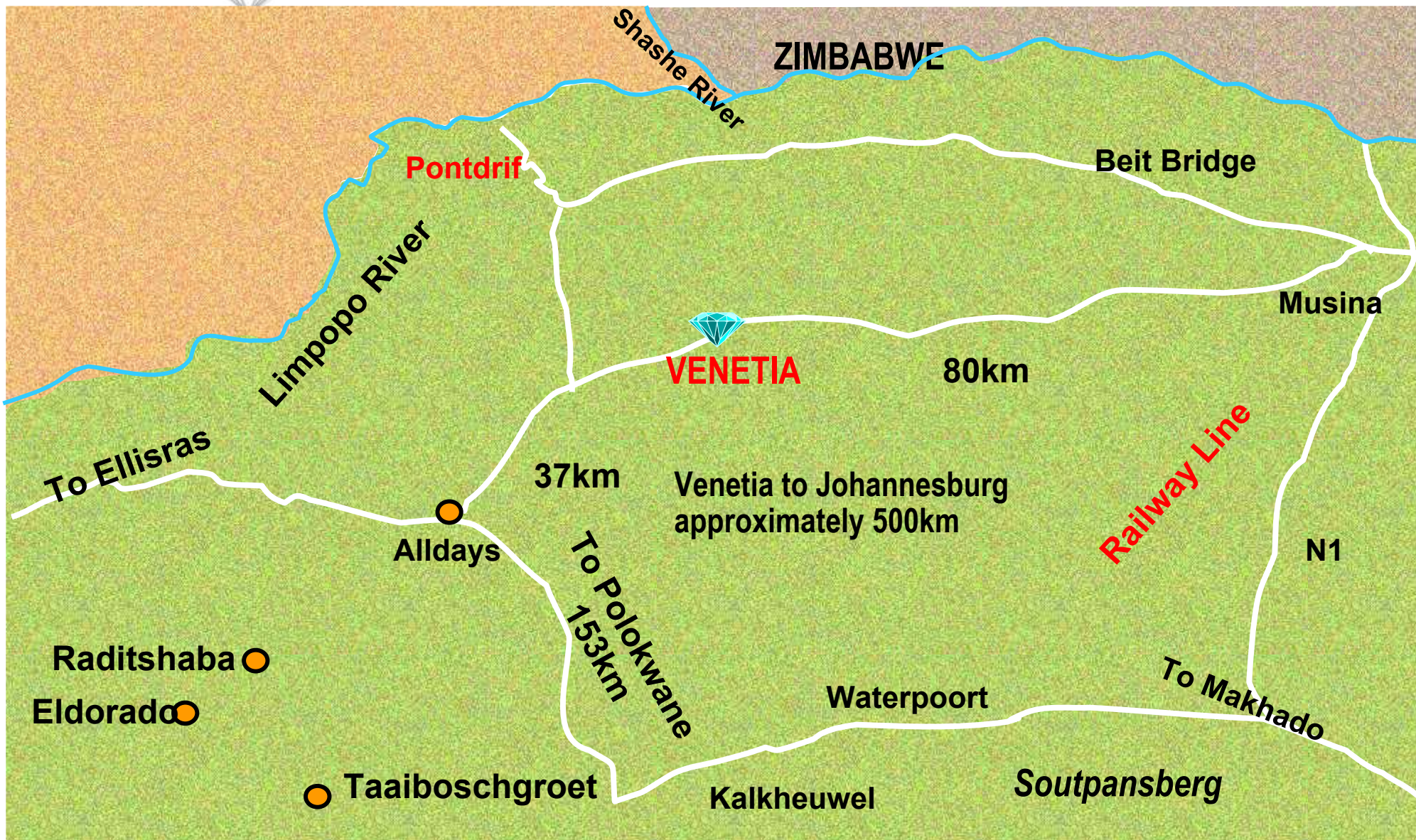


WILLIAMSON
TANZANIA





REGIONAL PLAN





HISTORY OF DISCOVERY

- ◆ **1903** - Diamond bearing gravels discovered on the farm *Seta*, 35km north-east of the present mine
- ◆ **1969** - De Beers undertook a soil-sampling programme
- ◆ **1974** - Discovery of a small kimberlite near Beit Bridge, Zimbabwe, leads to further sampling
- ◆ **1980** - Existence of Kimberlites confirmed in September
- ◆ **1988** - Feasibility study commissioned in July and completed in July 1989
- ◆ **1989** - Board approval of R1,1 billion project given in December
- ◆ **1992** - 30 month project with first production month being July

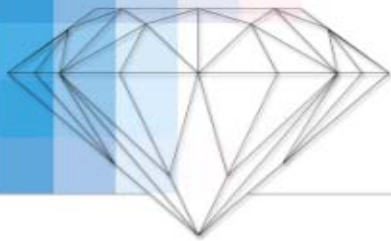


MISSION

To contribute to the
Growth and Profitability of
De Beers by mining diamonds

VISION

Our vision is to be the world leader in
Open Cast Diamond Mining



FOCUS 2002/2003

MAKE **TARGETS** WITH A MOTIVATED **WORKFORCE**

FOCUS AREAS:

- ◆ Performance Management
- ◆ Culture
- ◆ Cash flow and cost Management
- ◆ Technology
- ◆ People
- ◆ Innovation



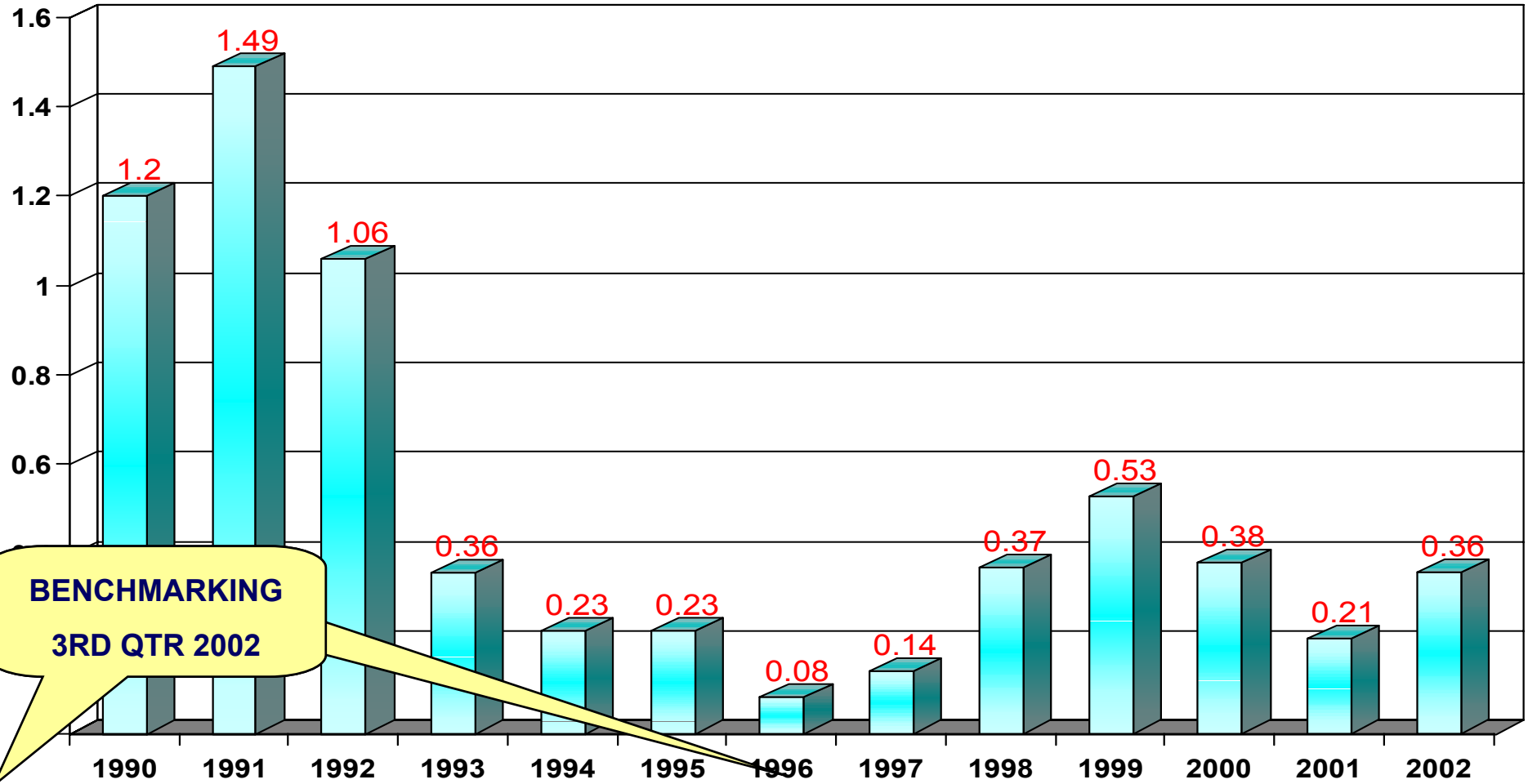
SAFETY, HEALTH & ENVIRONMENT



SAFETY ACHIEVEMENTS

- 1993** - NOSA 5 Stars
- 1995** - De Beers Chairman Safety Shield Award
- 1996** - NOSCART Grading (1st year) - Government Mining Engineer Safety Flag Award
- 1997** - De Beers Chairman Safety Shield Award - NOSCART Grading (2nd year)
Implementation of the new Mine Health and Safety Act
- 1998** - NOSCART Grading (3rd year)
- 1999** - NOSCART Grading (4th year) 1 million Injury Free Manhours
- 2000** - NOSCART Grading (5th year)
- 2001** - NOSCART Grading (6th year) 1 million Injury Free Man-hours
- 2002** - 1 million Injury Free Man-hours
- 2003** - Platinum NOSCART SHE integrated systems (7th year NOSCART)

LOST TIME INJURY FREQUENCY RATE



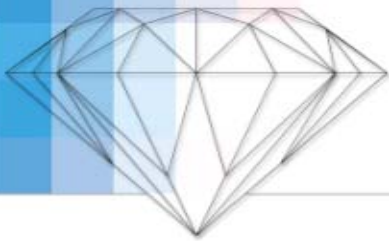
**BENCHMARKING
3RD QTR 2002**

DIAMOND MINE BENCHMARKING

BHP Diamonds	2.7	De Beers NB	0.2
Argyle Diamonds	1.34	Debswana	0.11
Diavik	0.49	Williamson	0.1
De Beers SA	0.44	Snaplake	0
De Beers Opex	0.26		

OPENCAST/SURFACE BENCHMARKING

Landau	0.46	Jwaneng	0.14
New Vaal Colliery	0.38	Orapa	0.09
Richards Bay	0.38	NMQ Mines	0.09
Kleinkopje	0.27	NMQ Sands	0.08
Namdeb	0.2	The Oaks	0



ENVIRONMENTAL MILESTONES

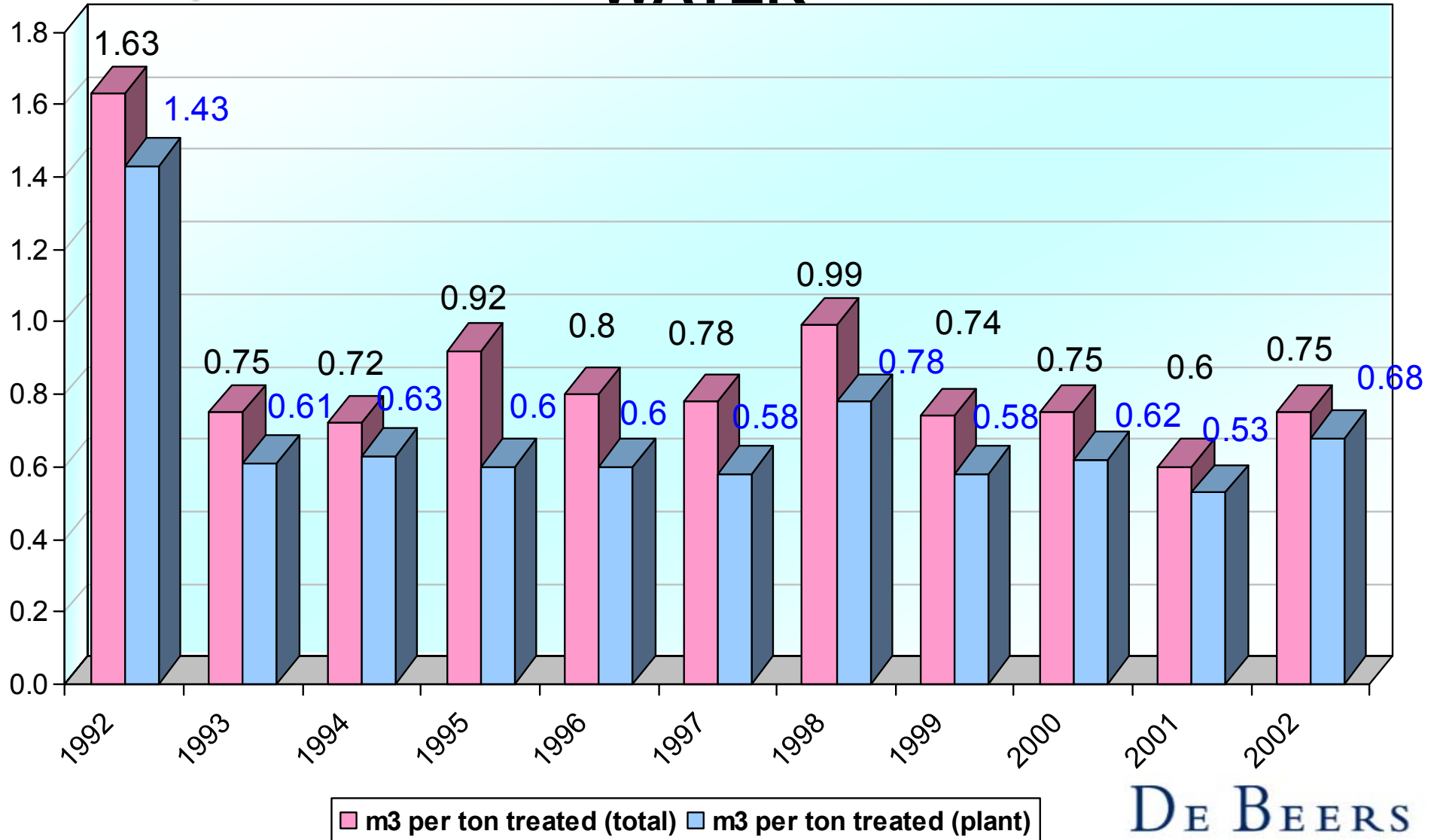
- 1991** - Environmental Impact Assessment (EIA) completed.
- 1994** - Environmental Management Program Report (EMPR) completed.
- 1995** - EPPIC Award received for work at Wellfields.
- 1998** - Environmental Management System (EMS) implemented.
- 1999** - Rehabilitation Program reviewed.
- 1999** - Salvage Management System implemented.
- 2000** - ISO 14001 certification.
- 2001** - ISO14001 certification retained.
Rehabilitation of Rugen Waste Rock dump started (continuous rehabilitation).
- 2002** - Re-certified ISO14001 compliant by NOSA - NQA.
Transplanted 8 Baobab trees





ENVIRONMENTAL STATISTICS

WATER





ENVIRONMENTAL STATISTICS *(cont)*

- ◆ Total mine water usage = 3.55 million m³/annum
- ◆ Total plant water usage = 3.2 million m³/annum
- ◆ Capacity of off-channel storage dam = 4 million m³
- ◆ Period water supply would last without river flow = 17 months
(longest recorded no flow period = 19 months measured in 1945)
- ◆ Underground water abstraction governed by two factors:
 - Water depth below baseline - not to exceed 4m
 - Stress of trees - not to exceed 23 bar
- ◆ Water recovered from slimes dam = + 30%
- ◆ Mean annual rainfall = 350mm
- ◆ Mean annual evaporation = 2500mm



ISO CERTIFICATION

ISO 9002

obtained in 1996

ISO 14001

obtained in 2000



CURRENT STATISTICS

- ◆ Life of Open Pit - 11 years
- ◆ 2002 tonnage treated - 4,7 Mt
- ◆ 2002 grade - 108 cpht
- ◆ 2002 caratage - 5,08 Mct
- ◆ Type of mine - open pit
- ◆ Number of employees - 809
- ◆ LTIFR (2002) - 0,36
- ◆ NOSA Grading - 5 Star (NOSCAR Platinum Status)

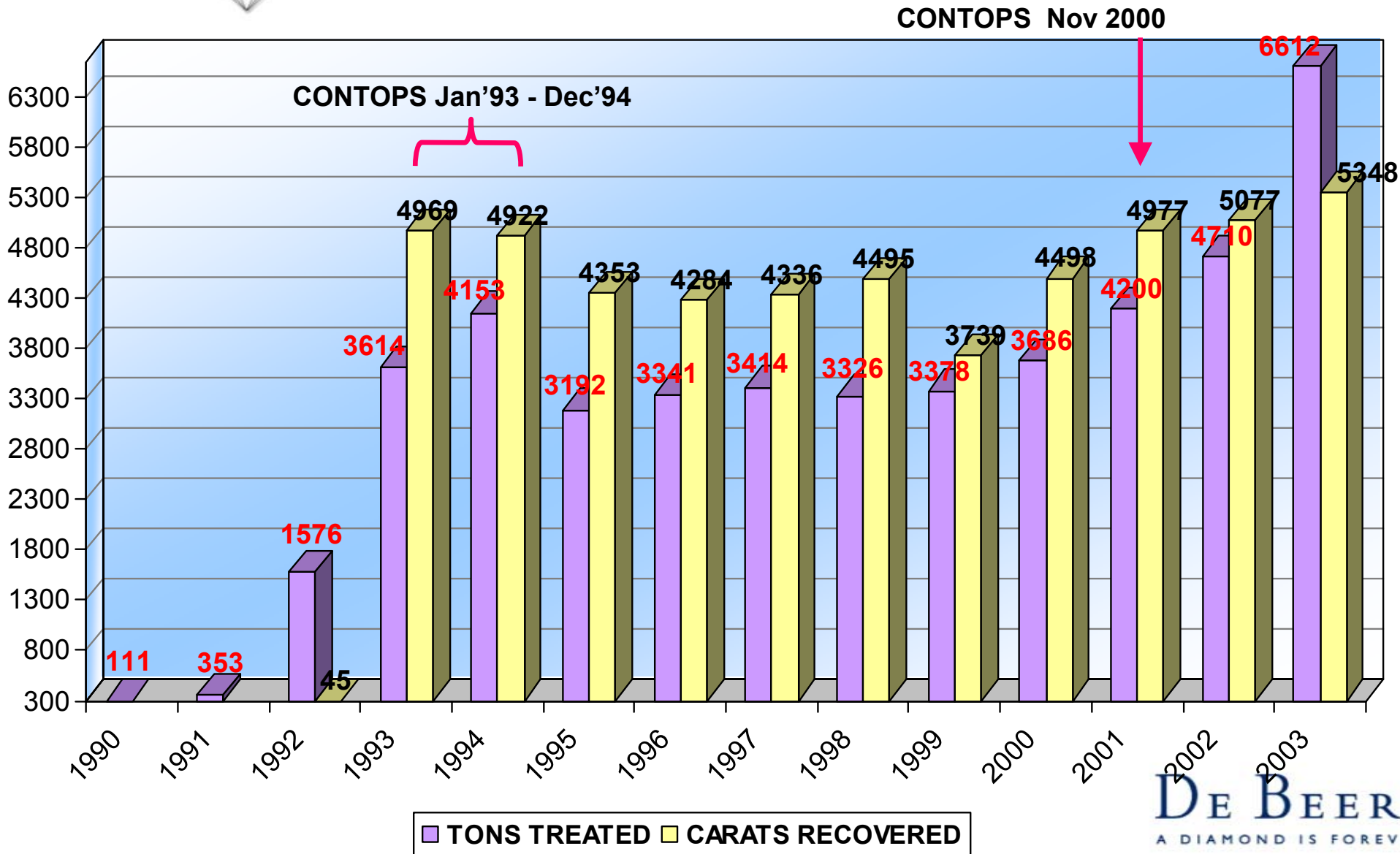


CURRENT STATISTICS *(cont)*

- ◆ Surface area of K001 and K002 - 17ha
- ◆ Size of current pit - 121 ha
- ◆ Ore treated to date - 43 million tons
- ◆ Waste removed to date - 129 million tons
- ◆ Carats recovered to date - 51 million carats
- ◆ Largest diamond recovered - 272 carats
- ◆ 2nd largest diamond recovered - 258 carats



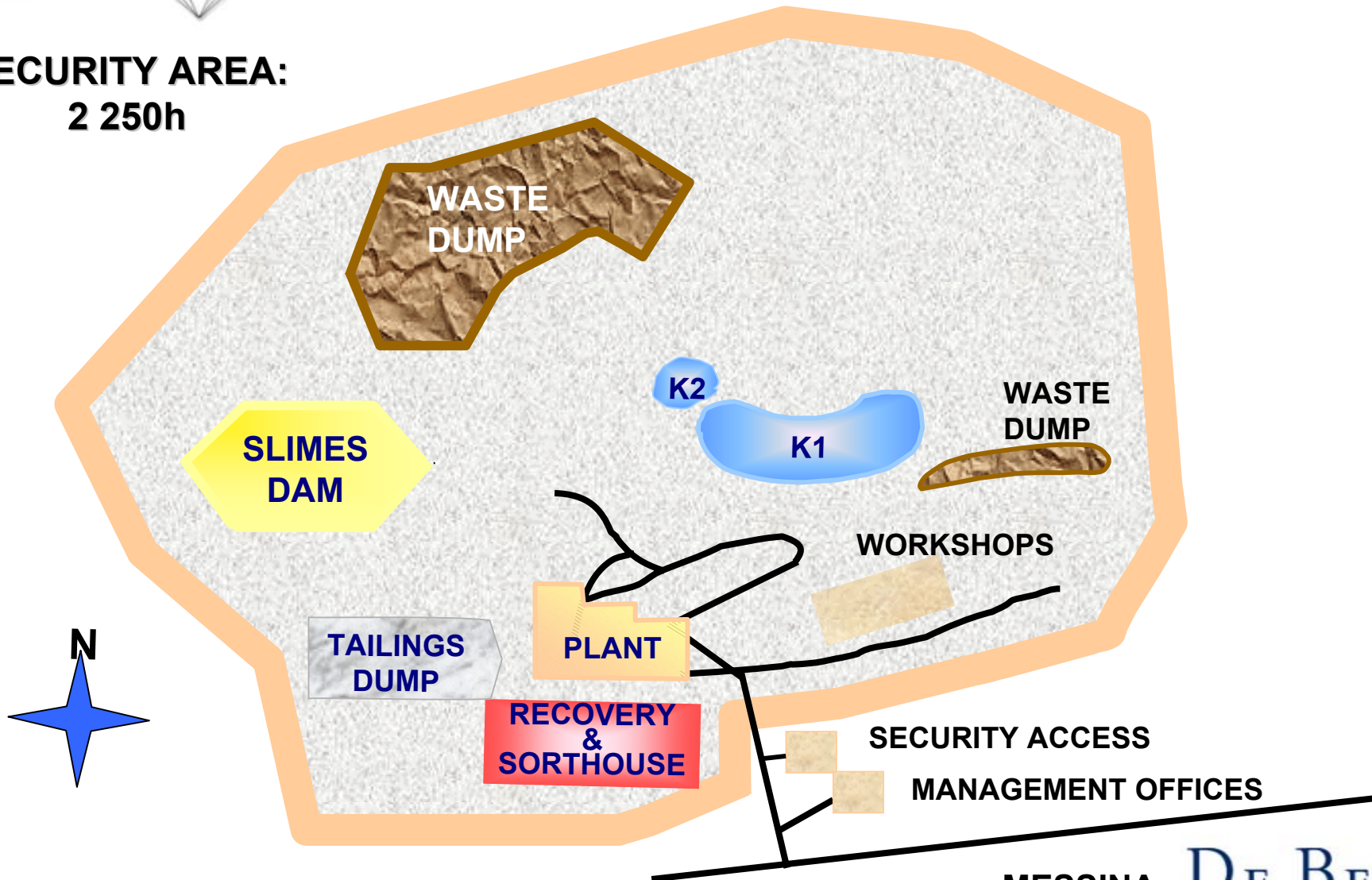
TONS TREATED CARATS RECOVERED

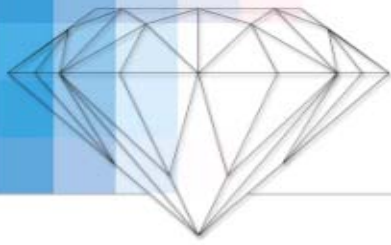




VENETIA MINE PLAN VIEW

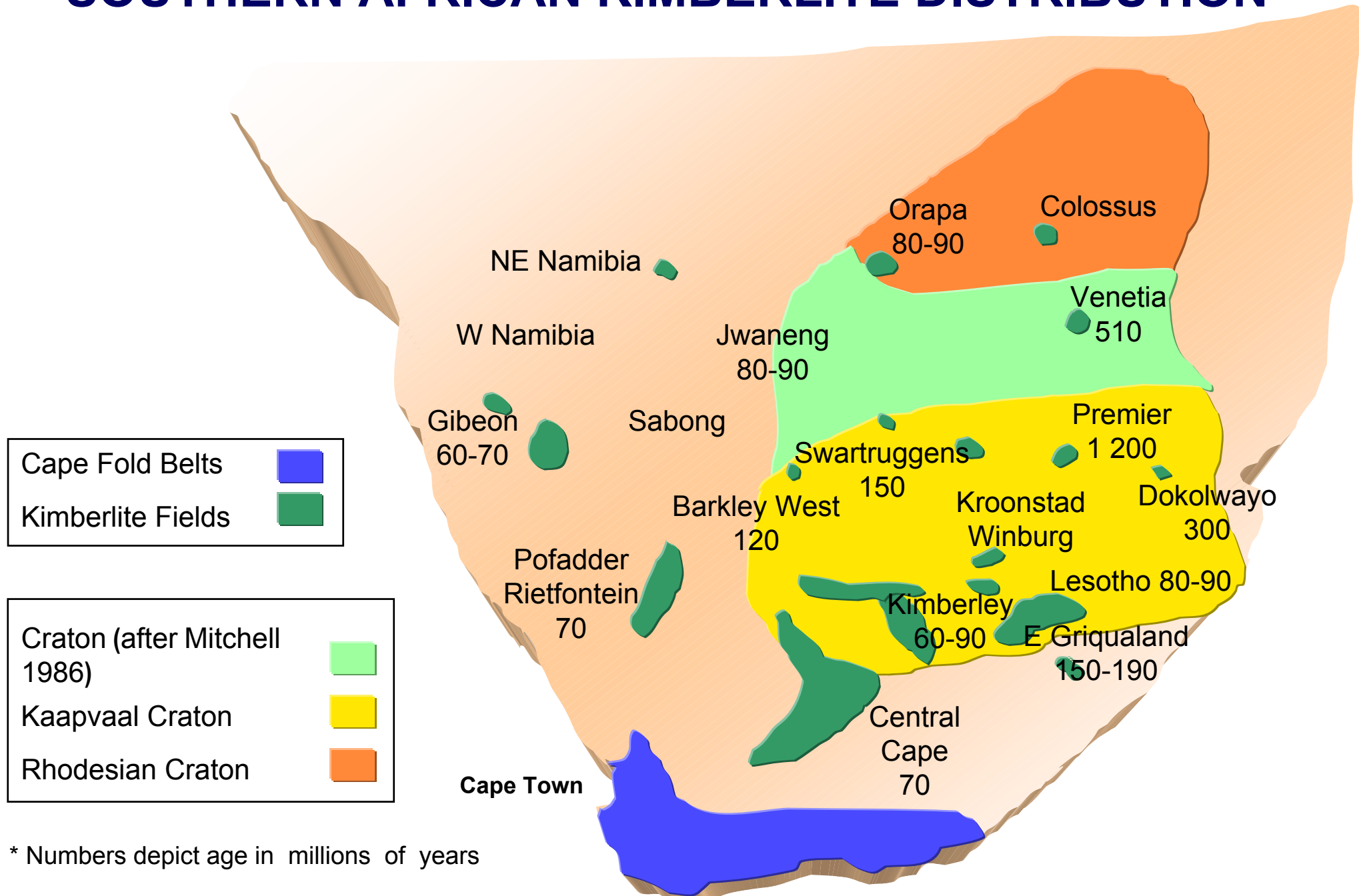
**SECURITY AREA:
2 250h**





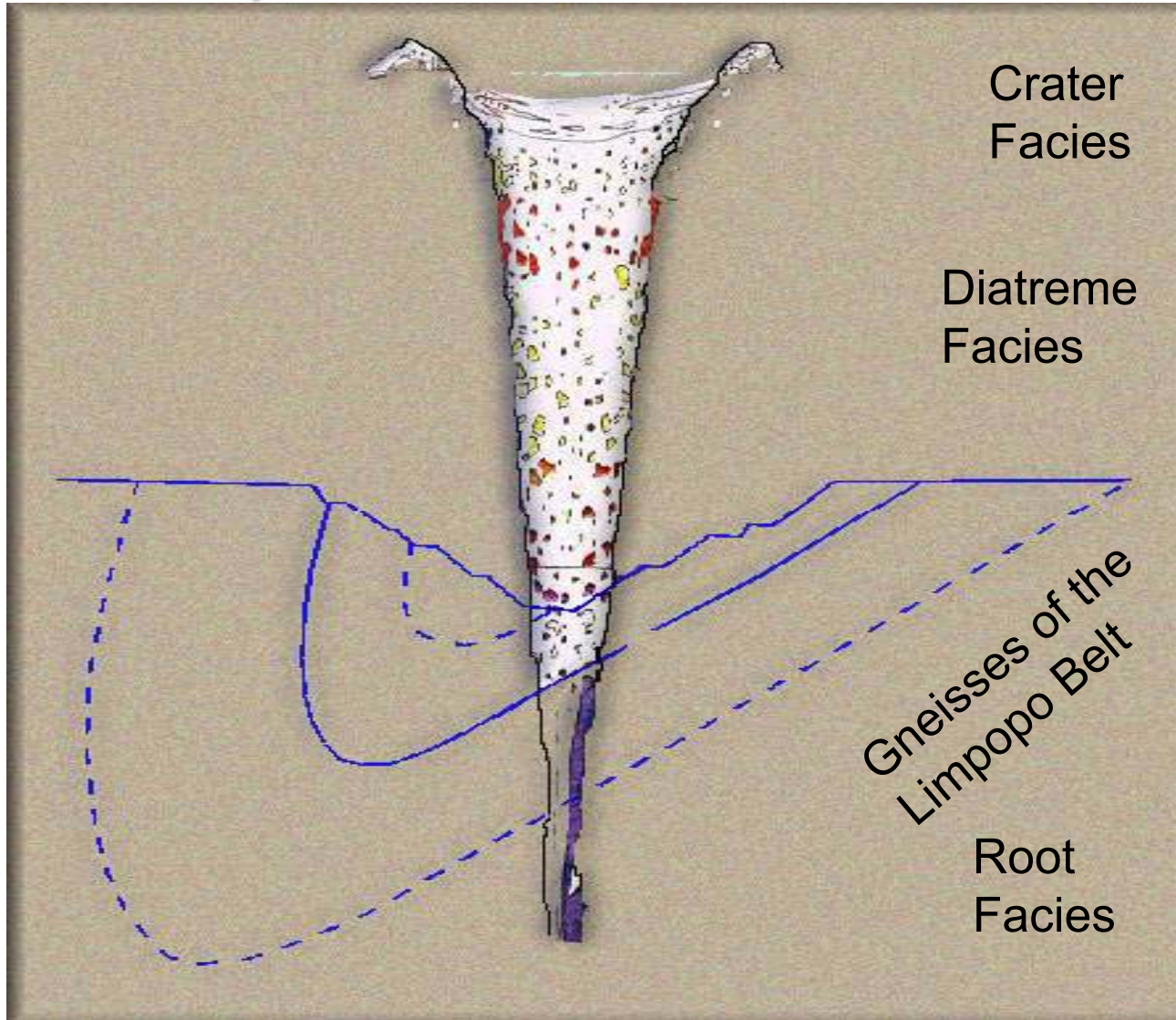
GEOLOGY

SOUTHERN AFRICAN KIMBERLITE DISTRIBUTION





SCHEMATIC GEOLOGICAL MODEL: VENETIA MINE K1 PIPE



Crater
Facies

Diatreme
Facies

Gneisses of the
Limpopo Belt

Root
Facies

Original Surface
at 530Ma

+/- 1 km of
erosion

Present Surface

VENETIA KIMBERLITES

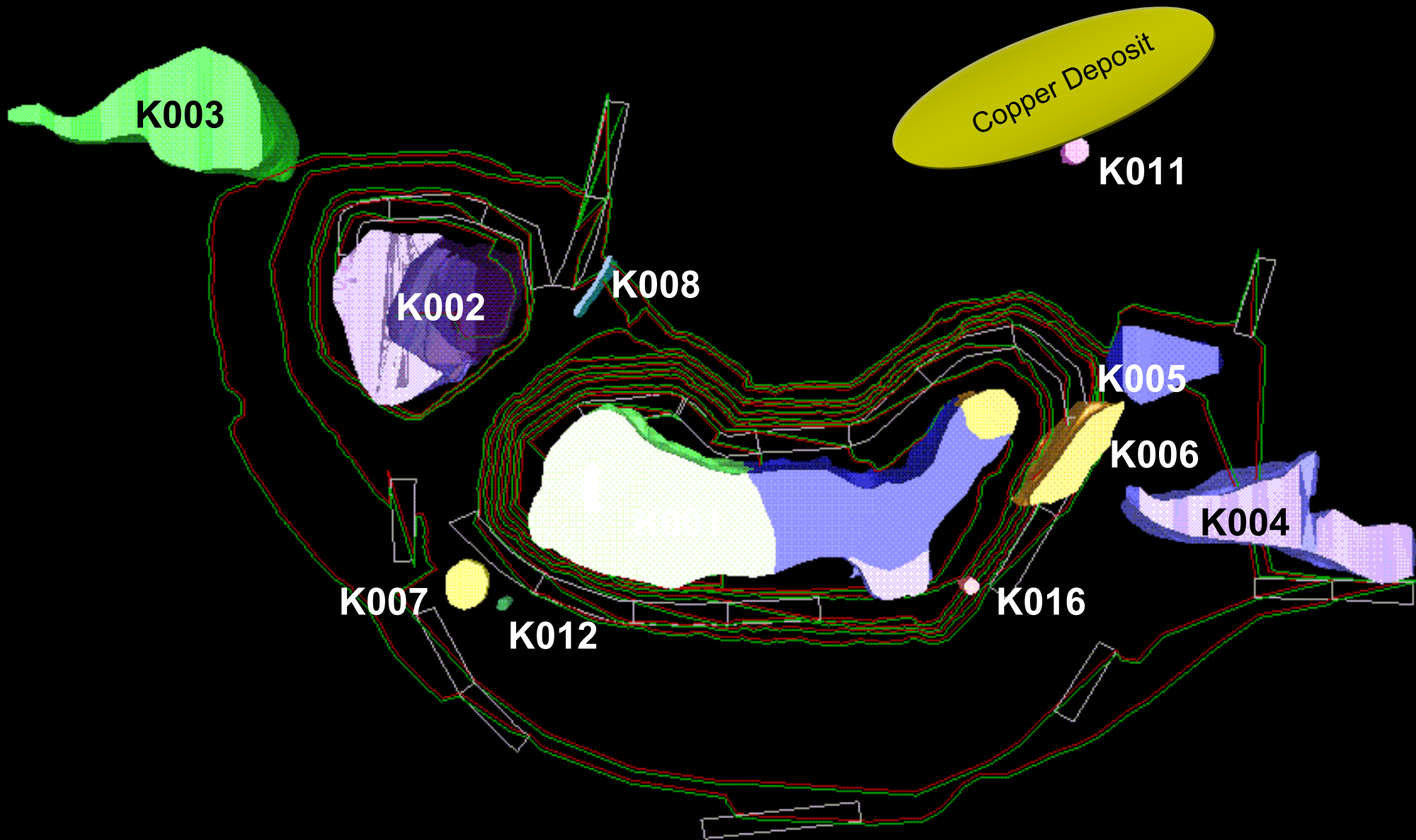
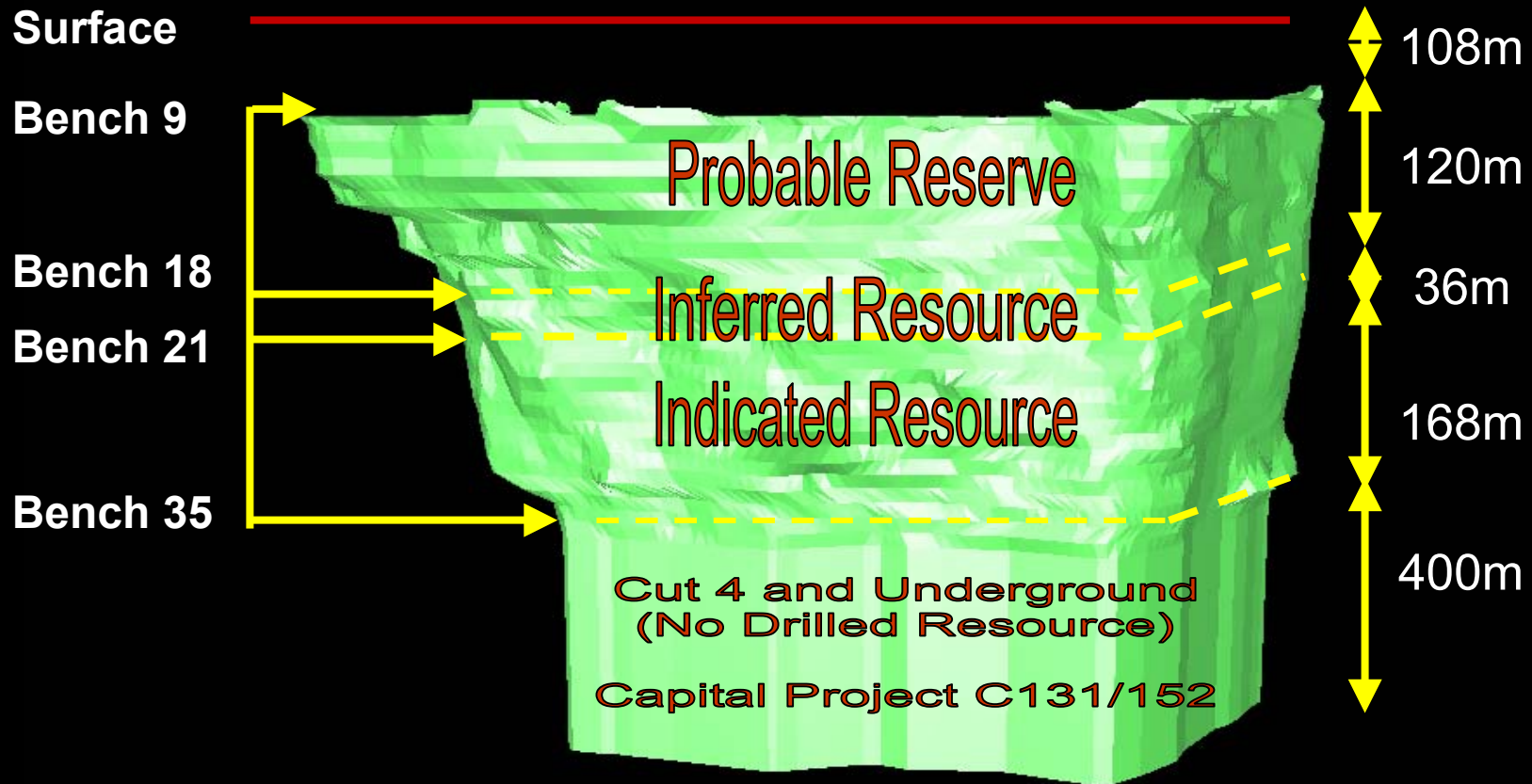


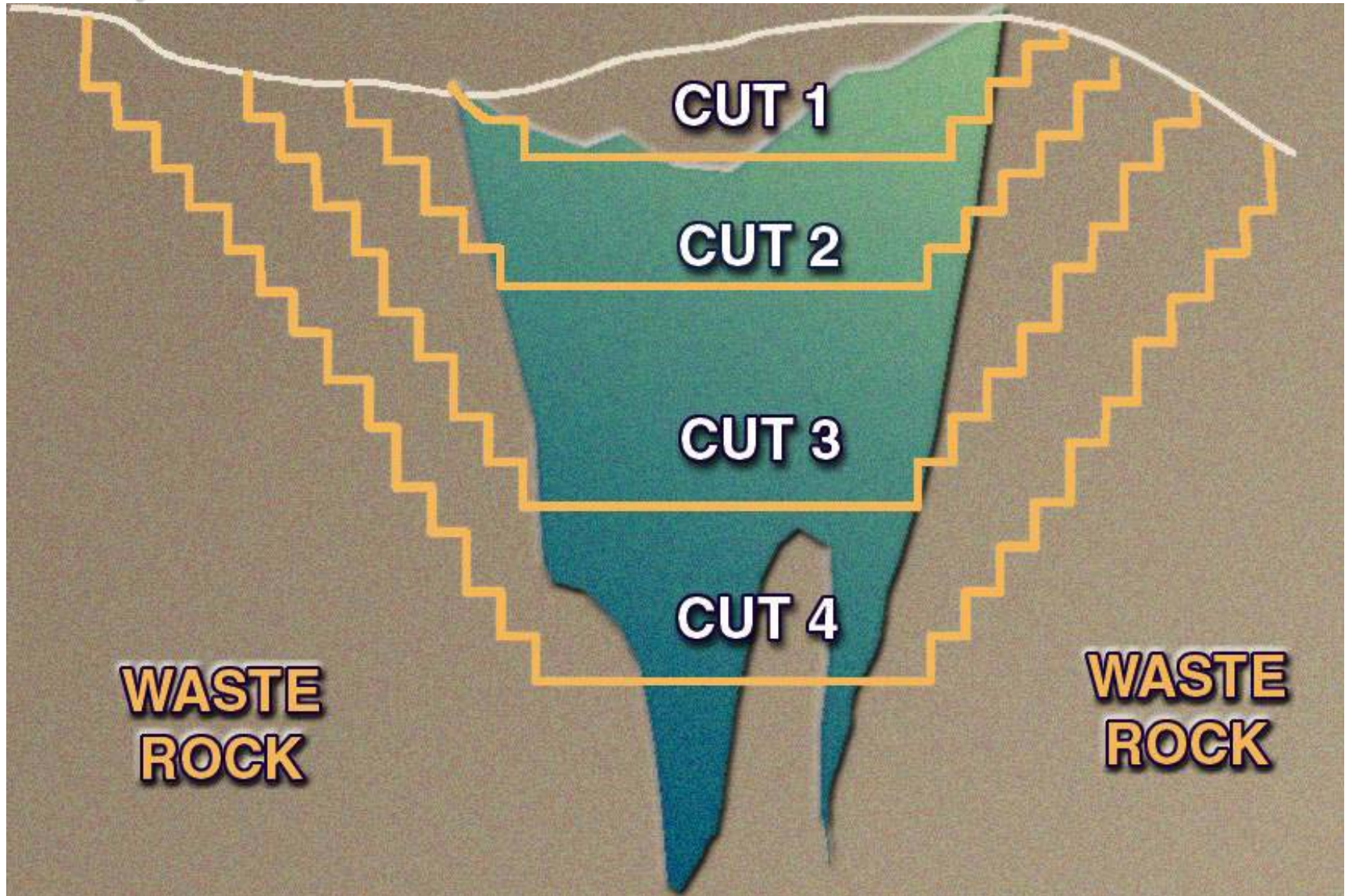
ILLUSTRATION SHOWING K1 PROBABLE RESERVE & RESOURCE



Reserve/Resources as at 31 December 2002

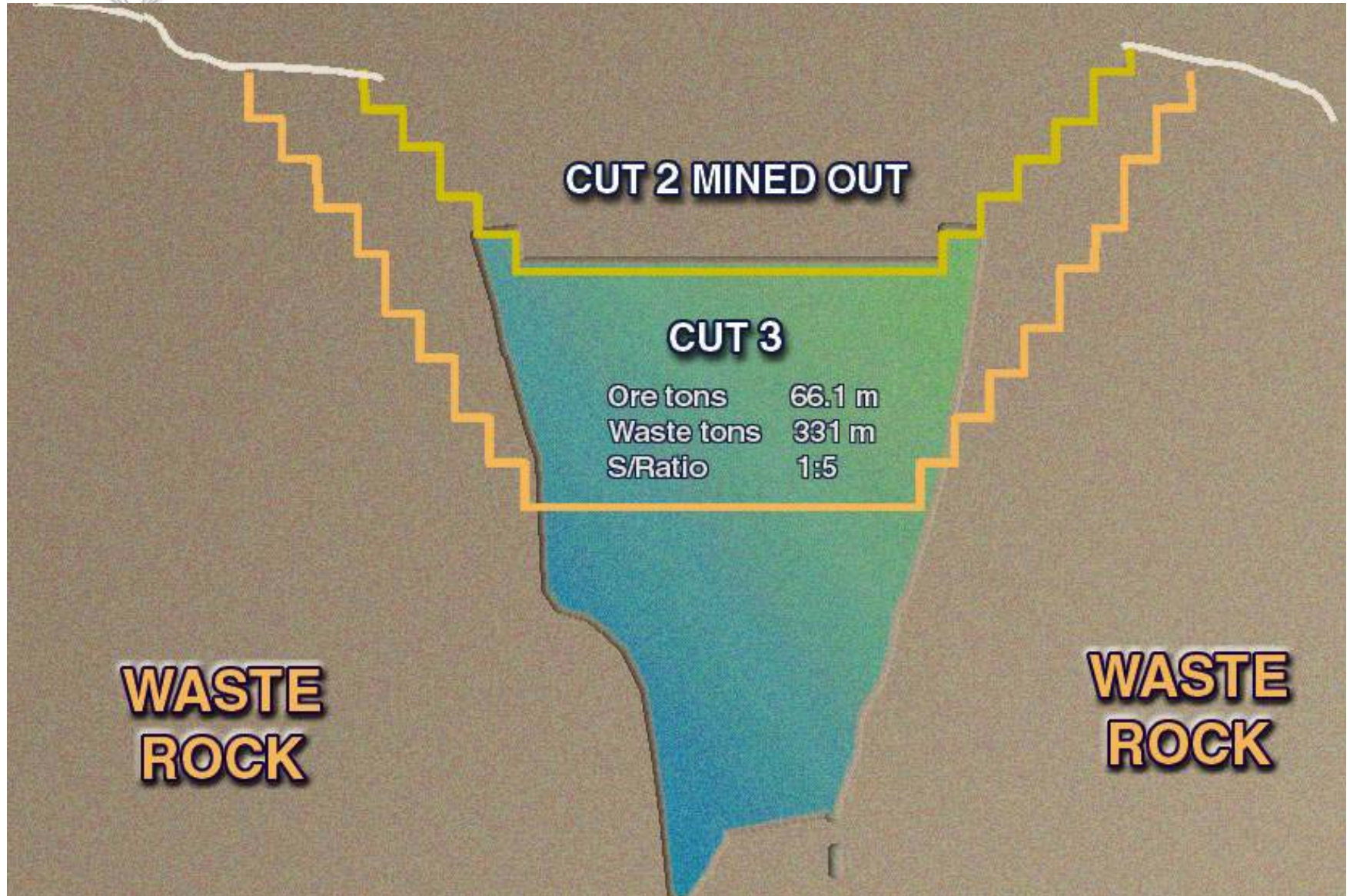


SCHEMATIC OF OPEN PIT WASTE CUTS



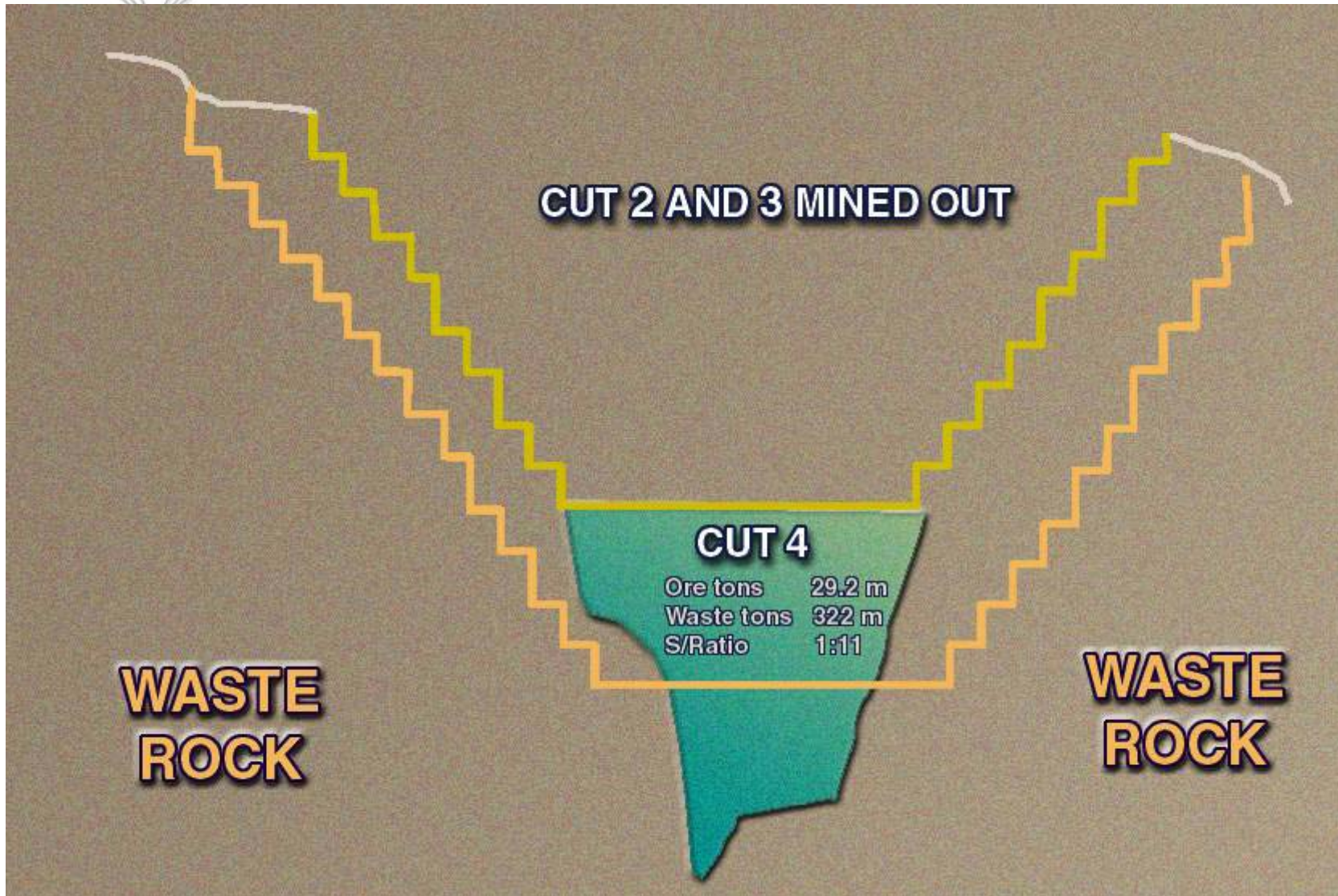


SCHEMATIC & STATISTICS OF CUT 3

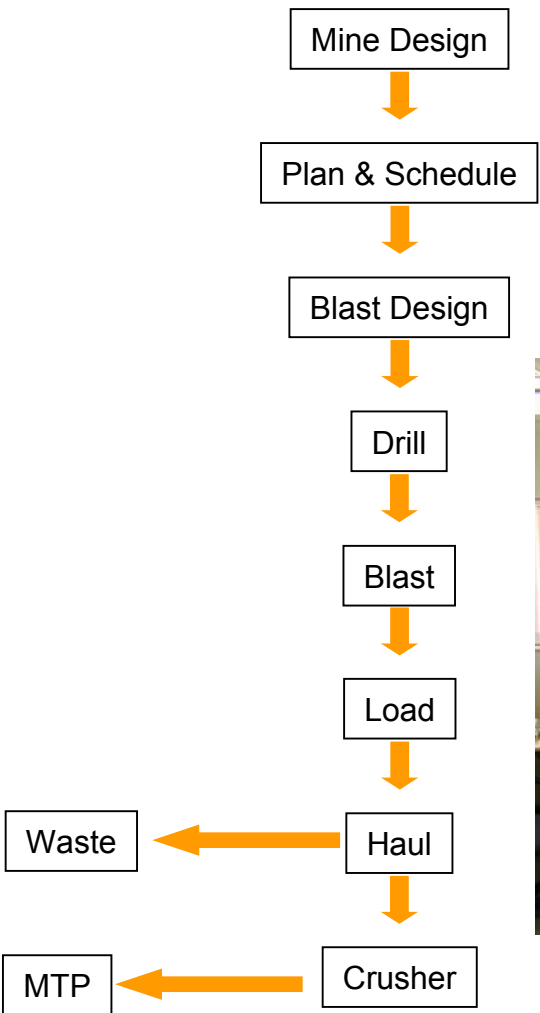




SCHEMATIC & STATISTICS OF CUT 4



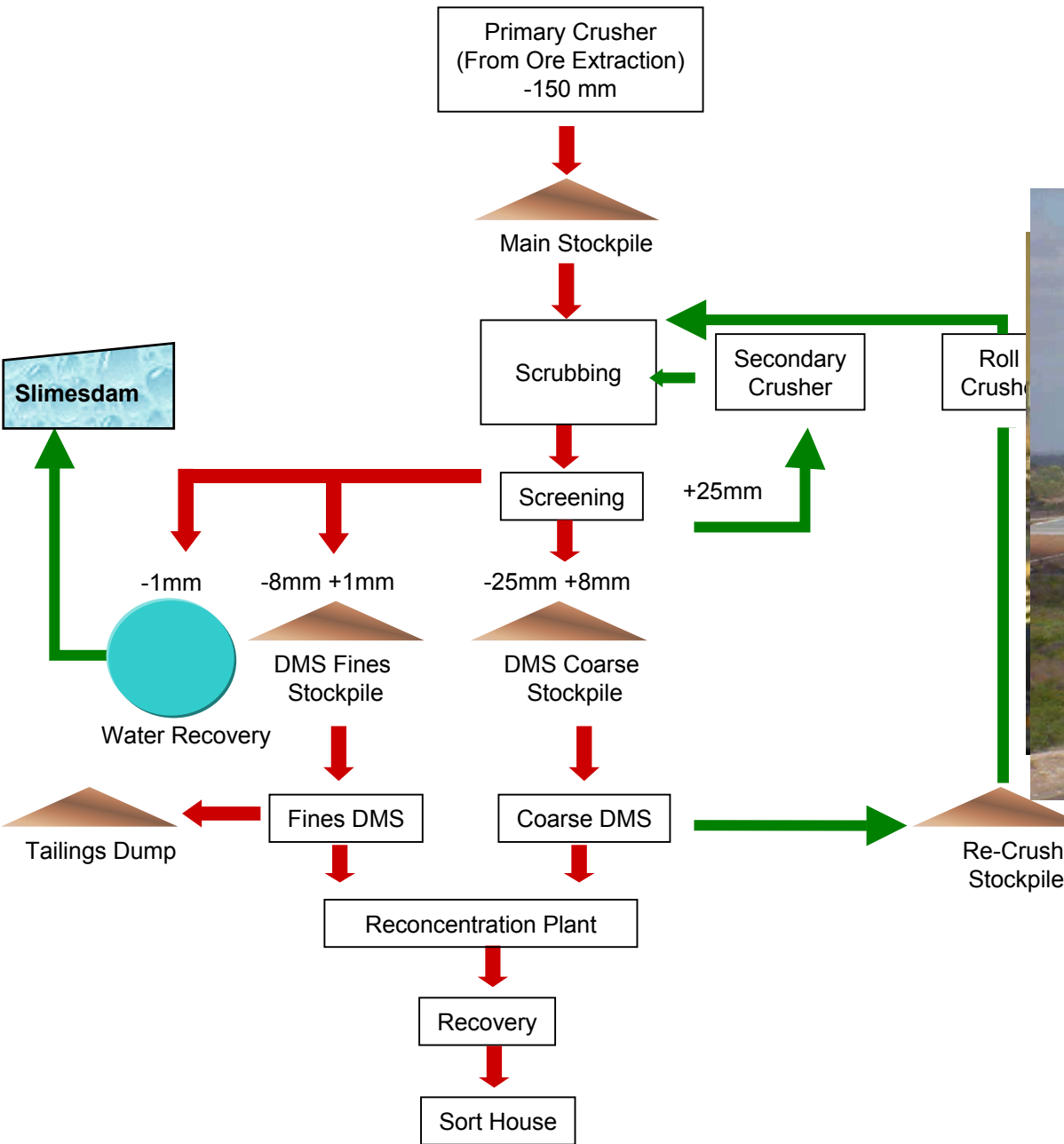
ORE EXTRACTION WORK FLOW DIAGRAM



ORE PROCESSING



ORE PROCESSING FLOW DIAGRAM

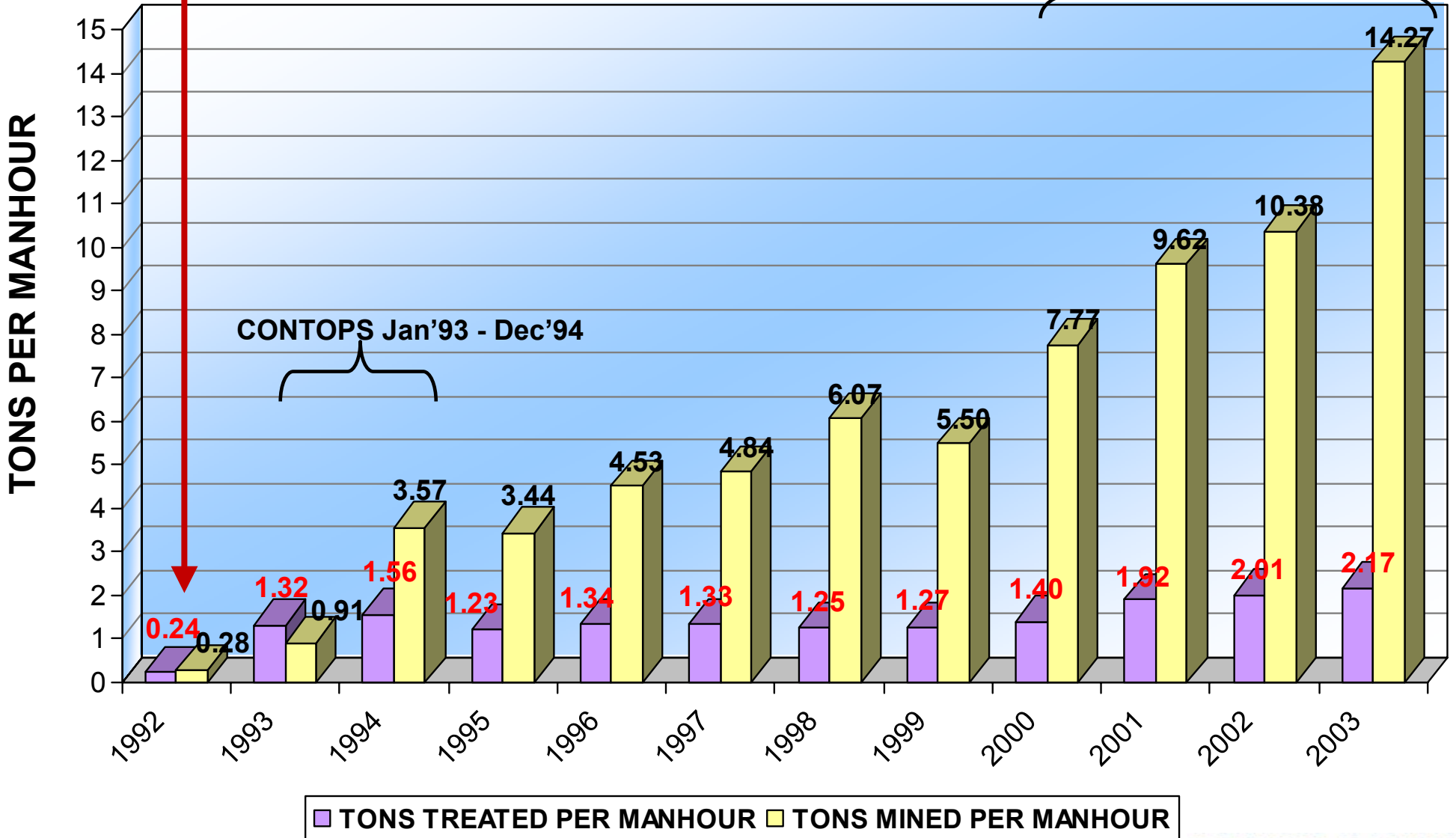




TONS PER MANHOUR

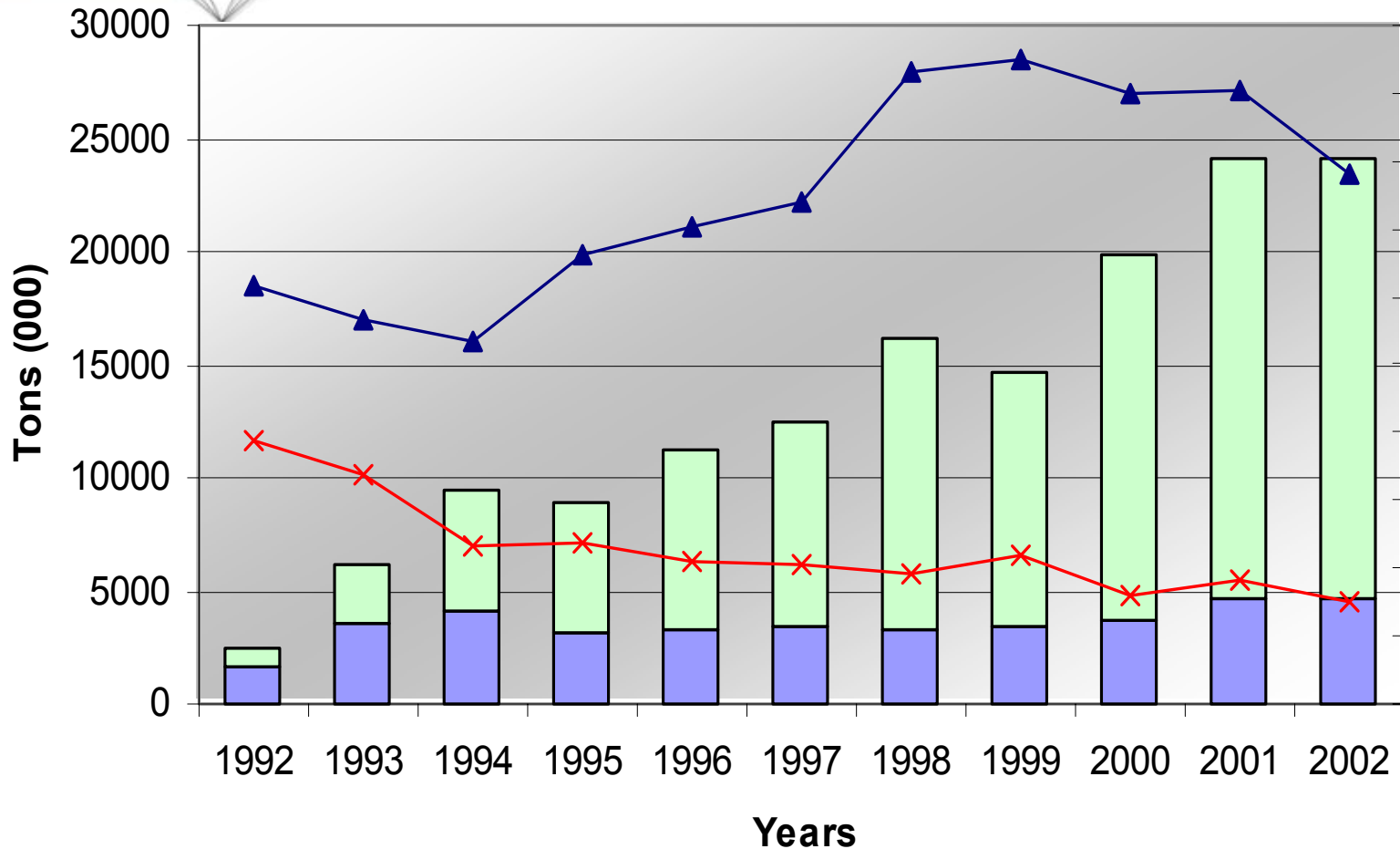
Commissioning

CONTOPS From 27/11/00





PRODUCTION AND WORKING COST PER TON



Tons Treated Waste Stripped Cost per Ton Treated Cost per Ton Mined

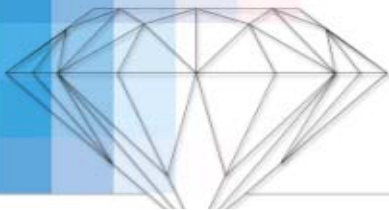
Working costs in 2002 rands



TECHNOLOGY



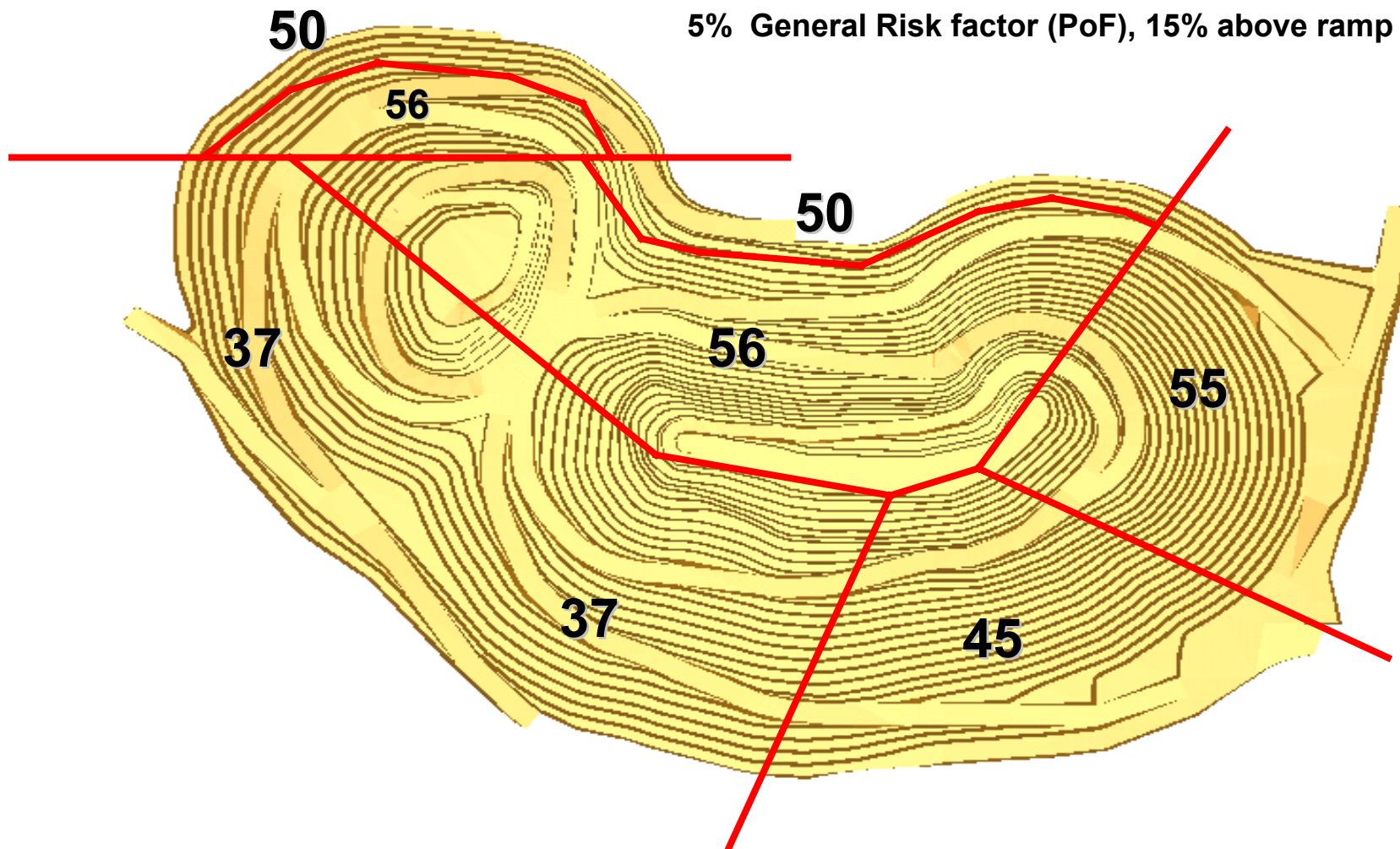
- ◆ Split shell mining method
- ◆ Fleet Management Control System
- ◆ Drill Monitoring System
- ◆ Computer Aided Earthmoving System
- ◆ Plant Control Expert System
- ◆ Mine Planning System
- ◆ Integrated Resource Asset Management System
- ◆ Batcat Diamond Transport System
- ◆ Scannex Personnel Scanner



REVISED SLOPE ANGLES

Results of Geotech study 1999/2000

5% General Risk factor (PoF), 15% above ramp Domain 4

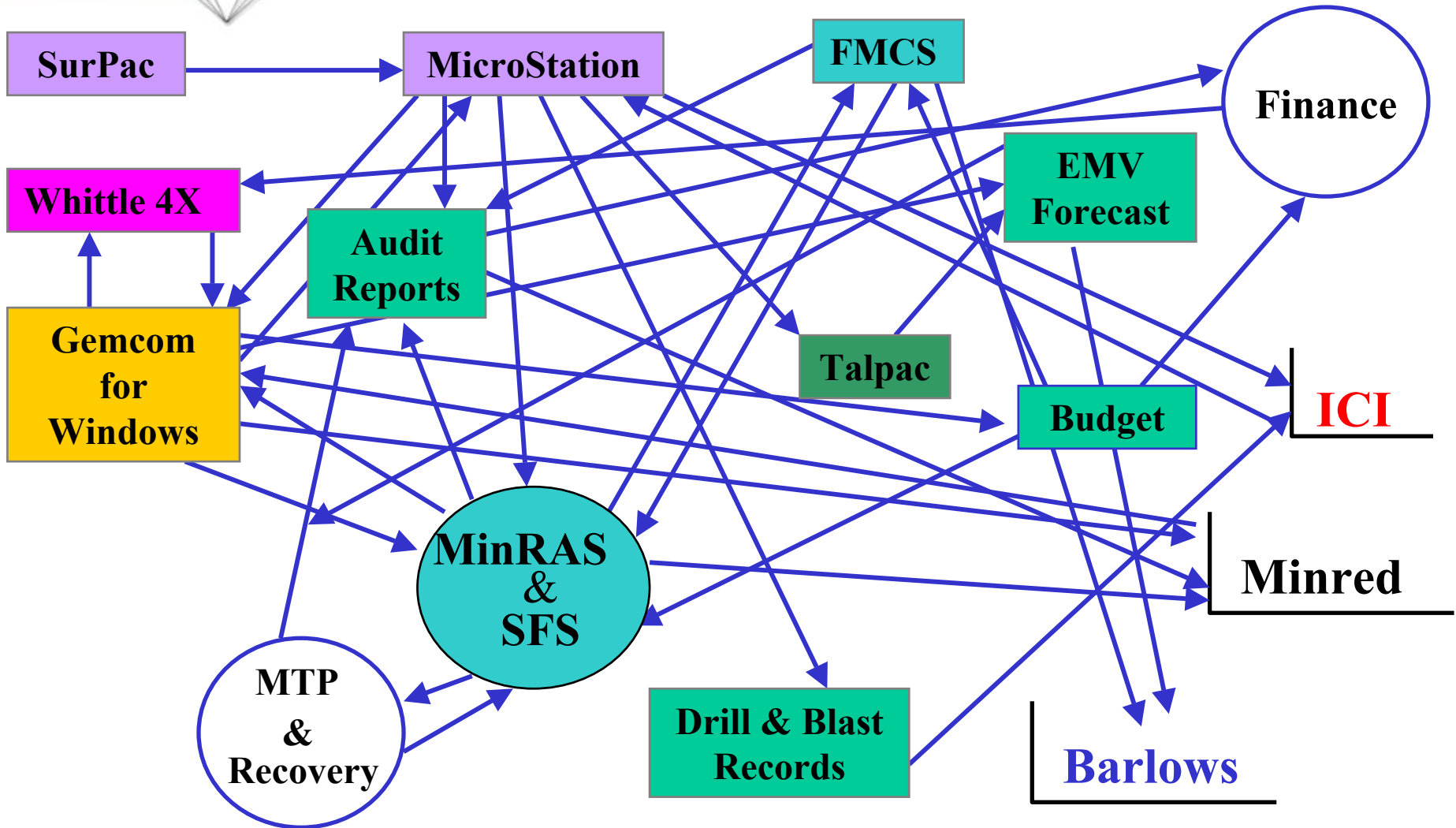
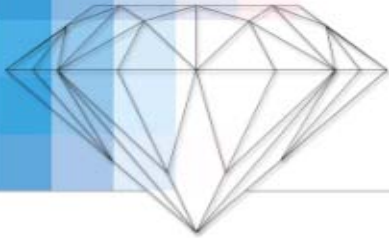




UPSIZING OF THE TRUCK FLEET 1992-2001

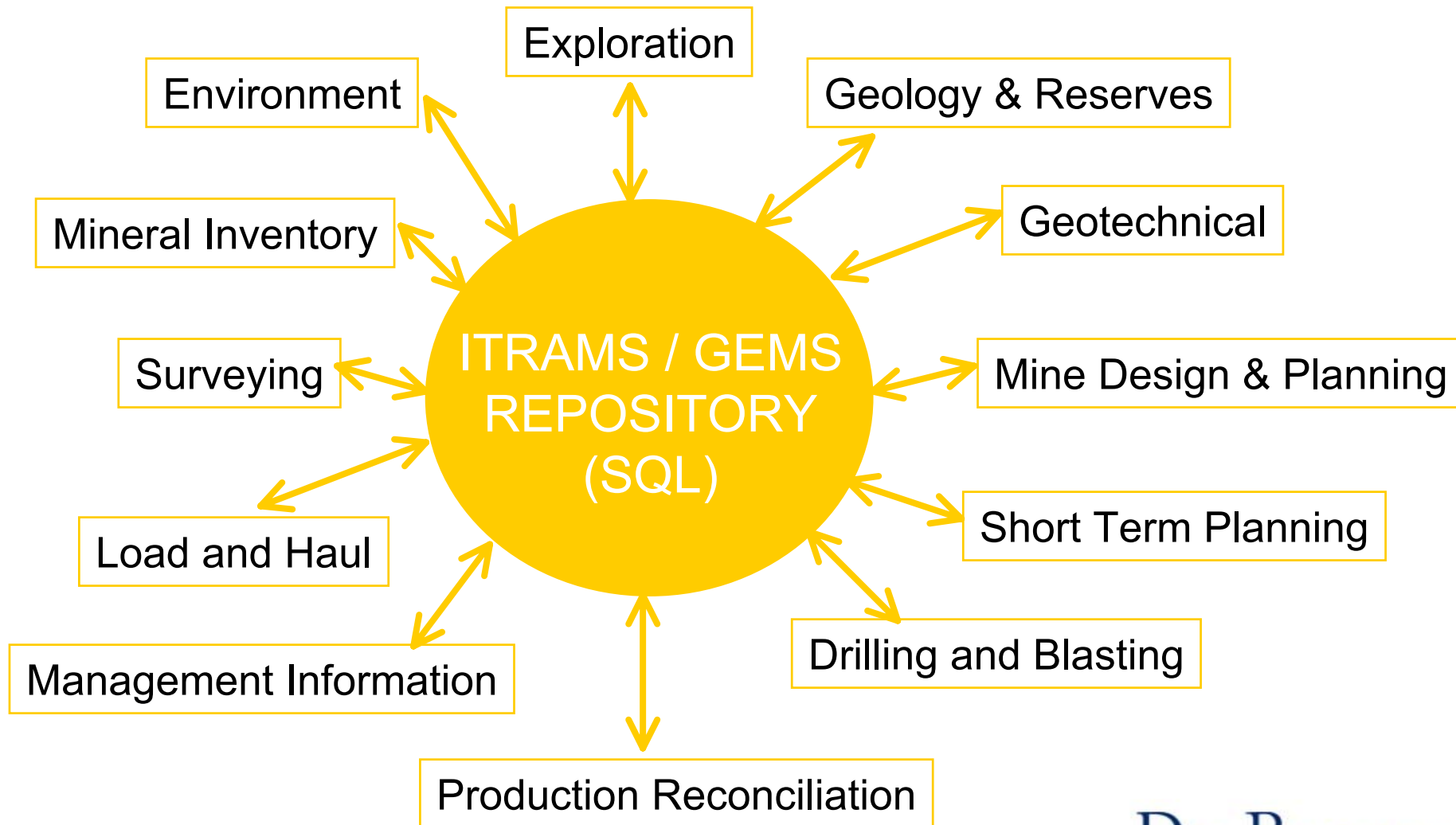


PRODUCTION DATA FLOW





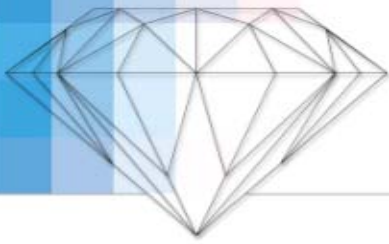
SYSTEM DESIGN...





SMART PARTNERSHIP

- ◆ common objective
- ◆ reduce working costs
- ◆ efficiency improvements
- ◆ increased productivity
- ◆ innovation and technology
- ◆ safety and training



COMMUNITY COMMITMENT

R100 000 TOWARDS:

- ◆ Schools
- ◆ Infrastructure
- ◆ Pre-School Toys
- ◆ Sports Development





- ◆ Social Worker (R50 000)
- ◆ Three houses (maintained):
 - physically impaired
 - mentally impaired
 - orphans
- ◆ Soup Kitchen
- ◆ Conservation Outings





SCHOOLS

- ◆ Re-Engineering - roles, structure changes
- ◆ Strategic Planning Sessions
- ◆ Teambuilding
- ◆ Computers (R 200 000 computer centres in both schools)
- ◆ Winning Teams - focus on English (Maths, Science, Biology)
- ◆ Teachers Salary Subvention - R 1,1 million
- ◆ Governing Body Representation
- ◆ Pass Rate - overall from 38% to 75%





THE END

